

My First Tag



HOW TO WRITE A BBS TAG IN 6 PARTS

from BBS Clef Notes

Part 4

Which Chords to use for My Melody?

©Copyright 2018 by Janice Wheeler
Prineville, OR 97754
janicejfw@aol.com

1

Presented by Janice Wheeler



- Member of **Pride of Portland Chorus**.
- Faculty Member of **Region 13 & Harmony College Northwest**.
- Coordinator of annual **Region 13 Arrangers WorkShop at HCNW**.
- Coordinator of annual **Tag Writing Contest** cosponsored by **HCNW & North by Northwest Region 13**.
- Recipient of **Tall Timbre Award** from **The Evergreen District of BHS** for "**outstanding contributions to HCNW**".

2

My First Tag – Part 4

WHICH CHORDS to use for MY MELODY?

3

My First Tag *in* 6 Parts

- Part 1 - Where Do I Begin?
 - CHOOSE A MELODY & WORDS ✓
- Part 2 - What's Next?
 - FIND A KEY SIGNATURE & A TIME SIGNATURE ✓
- Part 3 - What Else do I Need to Know?
 - FIND THE CHORDS FOR THE KEY SIGNATURE ✓
- Part 4 - **Which Chords to use for My Melody?**
 - CHOOSE ONE OF THOSE CHORDS FOR EACH MELODY NOTE
- Part 5 - Which Chord Note to use for Which Part?
 - ASSIGN CHORD PARTS TO VOICE PARTS
- Part 6 - What About Embellishments?
 - ADD BARBERSHOP FLOURISH & STYLE

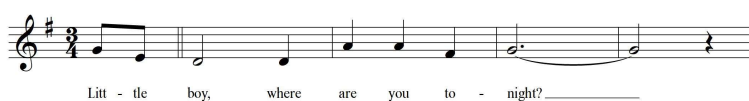
4

for . . . My First Tag . . . we have

- Chosen a Melody & Words (*Part 1*)
- Found the Key Signature & Time Signature (*Part 2*)

Where Are You Tonight?

Words & Music by Janice Wheeler



- Found the Chords for the Key Signature (*Part 3*)



5

G Major Chords

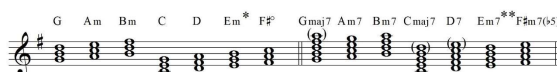
Barbershop Chord Vocabulary – Women's Voices

G Major Scale: G A B C D E F#
 Scale Degree: 1 2 3 4 5 6 7
 Chord Symbol: G Am Bm C D Em F#°
 Roman Numeral: I ii iii IV V vi vii°

G Major Scale



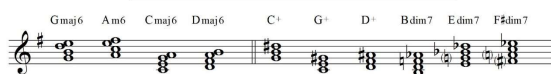
G Major Scale Triads, 7ths & (9ths)



* 3-note diminished chord not part of SAI Chord Vocabulary for BBS

** F#m7(b5) has same 4 notes as D7(no root)

G Major Scale 6ths, Augmented Triads, Diminished 7ths



6

BBS CHORD VOCABULARY

11 TYPES OF CHORDS

<ul style="list-style-type: none"> • Predominant • Auxiliary • Chromatically Altered 	<ul style="list-style-type: none"> • Major Triad (<i>3-note chord</i>) • Dominant 7th • Dominant 9th (<i>5-note chord</i>) • minor triad (<i>3-note chord</i>) • minor 6th & Major 6th • minor 7th & Major 7th • Major 9th (<i>5-note chord</i>) • diminished 7th • Augmented (<i>3-note chord</i>) <p><small>♯: 3-note diminished chord is not generally used in SAI Barbershop; BHS includes 3-note diminished chord, augmented dominant 7th and dominant 7th (♯5) chords.</small></p>
--	---

7

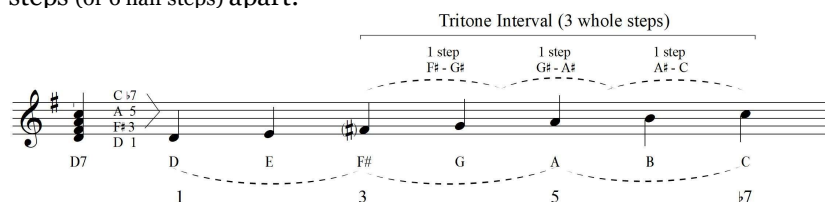
Chord Facts

- Chords are named by their root note (fundamental tone)
- A Chord results when 3 or more different pitches of a scale are sounded simultaneously. In BBS, we utilize primarily:
 - ✦ **Triads** – chords with 3 pitches – 3-note chords
 - ✦ **7ths** – chords with 4 pitches – 4-note chords – *aka* tetrads
 - ✦ **9ths** – chords with 5 pitches – 5-note chords – *aka* pentads
- Chords can be consonant or dissonant
 - ✦ **Consonant** chords – are stable – “at rest”
 - ✦ **Dissonant** chords – are unstable – “restless” (wanting to move on)

8

What Accounts for “restlessness” of Dominant 7th Chords

- The Tritone Interval is what accounts for the “*restlessness*” of Dominant Family Chords.
- A Tritone Interval is created when 2 notes within a chord are 3 whole steps (or 6 half steps) apart:



- In the Key of G Major, the tritone interval of F# → C is part of two 7th chords (and one 9th chord):
 - ✦ D7 – shown above
 - ✦ F#m7(b5) & D9



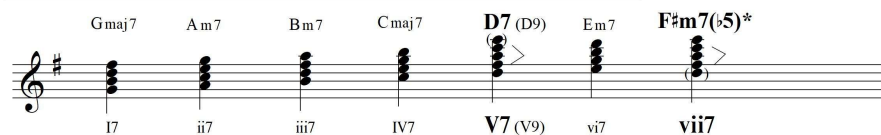
9

Chords of the G Major Scale with a Tritone Interval

The chords in the **G Major Scale** that have **Tritone Intervals** in their structures are:

- ✦ **D7/D9** (the V7/V9 chords)
- ✦ **F#m7(b5)** (the vii7 chord that can be used as a V9 chord/no root).

Harmonized 7ths of G Major Scale with a Tritone Interval -- Both are F# - C



*This Leading Dominant Chord
Can be used as D9 (V9) since it has
the same 4 notes as D9/no root and
the same Tritone Interval as D7 (V7)

10

BBS CHORD VOCABULARY

11 TYPES OF CHORDS

- **Predominant**
- **Auxiliary**
- **Chromatically Altered**
- **Major Triad** (*3-note chord*)
- **Dominant 7th**
- **Dominant 9th** (*5-note chord*)
- **minor triad** (*3-note chord*)
- **minor 6th & Major 6th**
- **minor 7th & Major 7th**
- **Major 9th** (*5-note chord*)
- **diminished 7th**
- **Augmented** (*3-note chord*)

♭: 3-note diminished chord is not generally used in SAI Barbershop; BHS includes 3-note diminished chord, augmented dominant 7th and dominant 7th (♭5) chords.

11

Comparison of 7th Chords

Chord Name:	C Major 7 th	C Dominant 7 th	C minor 7 th	C minor 7 th flat 5	C diminished 7 th *
Chord Symbol:	Cmaj7	C7	Cm7	Cm7(♭5)	Cdim7
Chord Spelling:	CEGB C → B 11 half steps	CEGB \flat C → B \flat 10 half steps Flat 7	CE \flat GB \flat C → B \flat 10 half steps Flat 7, 3	CE \flat G \flat B \flat C → B \flat 10 half steps Flat 7, 3, 5	CE \flat G \flat B $\flat\flat$ C → B $\flat\flat$ 9 half steps Double Flat 7, Flat 3, 5

*Sometimes also called
"C fully diminished 7th"

12

So as we choose chords for each Melody note . . .

Choose chords that make BBS sound like BBS

What makes BBS sound like BBS?

- ✧ Lots of those **3 Predominant BBS Chords**
 - **Major Triads** — especially the Tonic chord of the Key — **G Major triad**
 - **Dominant 7th Chords** — with a **Tritone Interval** between chord tones F \sharp and C
 - **Dominant 9th Chords** — with a **Tritone Interval** between chord tones F \sharp and C
- ✧ **Patterns of Tension & Release** that result from the resolution of the “*restless*” V7 and V9 chords to the “*stability*” or “at rest” feeling of the Major Triad -- especially:
 - V7 resolving to I — **D7** --- → **G Major triad**
 - V9 resolving to I — **D9** --- → **G Major triad**
 - V9 resolving to V7 resolving to I — **D9** --- → **D7** --- → **G Major triad**
 - V7 resolving to V9 resolving to I — **D7** --- → **D9** --- → **G Major triad**

13

Choosing a Chord for Each Melody Note

from the Chords of G Major — Try Predominant BBS Chords first

Where Are You Tonight?

Words & Music by Janice Wheeler

Litt - tle boy, where are you to - night?

G E D D A A F \sharp G

G Major Scale Triads, 7ths & (9ths)

G Am Bm C D Em F \sharp m Gmaj7 Am7 Bm7 Cmaj7 D7 Em7 F \sharp m7(b5)

*3-note diminished chord not part of SAI Chord Vocabulary for BBS

14

Melody Notes & G Major Chord Choices

BBS Chord Vocabulary – Triads, 7ths & 9ths

Melody Notes	Triad	7 th /9 th Chords
• G	× <u>GBD</u> *	GBDF#
	× EGB	EGBD
	× <u>CEG</u>	CEGB
	× --	ACEG
• E	× EGB*	EGBD
	× <u>CEG</u>	CEGB / CEGBD
	× --	<u>F#ACE</u> / <u>DF#ACE</u>
• D	× <u>GBD</u>	GBDF / GBDF#A
• D	× BDF#	BDF#A
	× --	EGBD
	× <u>DF#A</u>	<u>DF#AC</u> / <u>DF#ACE</u>
• A	× ACE	ACEG
• A	× <u>DF#A</u>	<u>DF#AC</u> / <u>DF#ACE</u>
	× --	<u>F#ACE</u>
• F#	× --	<u>F#ACE</u> *
	× BDF#	BDF#A
	× <u>DF#A</u>	<u>DF#AC</u> / <u>DF#ACE</u> *

15

BBS Vocabulary Chords for My First Tag

using mostly . . . Predominant Chords

G Major Scale: G A B C D E F#
 Scale Degree: 1 2 3 4 5 6 7
 Chord Symbol: G Am Bm C D Em F#°
 Roman Numeral: I ii iii IV V vi vii°

Where Are You Tonight?

Words and Music by Janice Wheeler

G Em D7 D7 D7 D7 D9 G

Tenor Lead

1 2 3 4

Lit - tle boy/girl, where are you to - night? _____

Bari Bass

I vi V7 V7 V7 V7 V9 I

16

My First Tag *in* 6 Parts

- Part 1 - Where Do I Begin?
 - *CHOOSE A MELODY & WORDS* ✓
- Part 2 - What's Next?
 - *FIND A KEY SIGNATURE & A TIME SIGNATURE* ✓
- Part 3 - What Else do I Need to Know?
 - *FIND THE CHORDS FOR THE KEY SIGNATURE* ✓
- Part 4 - **Which Chords to use for My Melody?**
 - *CHOOSE ONE OF THOSE CHORDS FOR EACH MELODY NOTE* ✓
- Part 5 - Which Chord Note to use for Which Part?
 - *ASSIGN CHORD PARTS TO VOICE PARTS*
- Part 6 - What About Embellishments?
 - *ADD BARBERSHOP FLOURISH & STYLE*

17

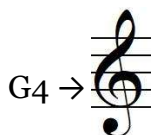
You May Be Thinking . . .

- What about the other staff on the manuscript of BBS sheet music – the one with the Bass Clef symbol?
- You're right – so far, we've only been looking at Melody Notes & Chords on the Treble Clef (*aka* G Clef).
- Right now we're going to take a close look at the sheet music format used for BBS sheet music:
 - ✦ Focus on the Bass Clef
 - ✦ The Grand Staff & The Grand Staff for Women's BBS

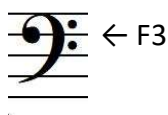
18

The Bass Clef – aka The “F” Clef

- So far, we’ve only looked at notes on the **Treble Clef** – we know how to name notes there because the Curl of the Treble Clef Symbol shows where “G₄” is:



- On the **Bass Clef** – we know how to name notes on the Bass Clef because the Two Dots on either side of the next-to-the-top line shows where “F₃” is – the first F below Middle C:

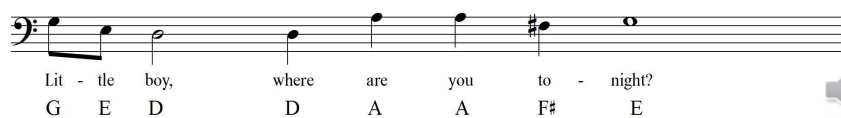
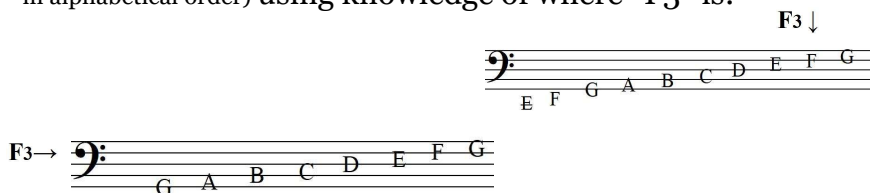


19

Bass Clef

NAMES OF PITCHES OF NOTES

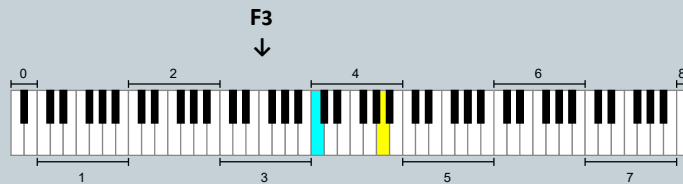
As with the Treble Clef, the first 7 letters of the alphabet are used to name the pitches for notes on the lines and spaces of the Bass Clef. You can place them on the staff below (ascending in alphabetical order) using knowledge of where “F₃” is:



20

“F₃” on the 88-key Piano Keyboard

Piano Keyboard Graphic
Standard Way to Name Octaves
Source: Wikipedia



Aqua Key is Middle C
Yellow Key is A440 (Standard Tuning Reference)

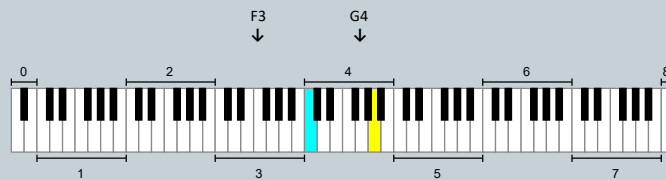
The “F” (indicated by the 2 dots of the Bass Clef Symbol on either side of the next-to-the-top line of the Bass Clef) (↓)
This F is also known as “F₃” because it is in the 3rd Octave

https://commons.wikimedia.org/wiki/File:Piano_Frequencies.svg#/media/File:Piano_Frequencies.svg

21

“F₃” and “G₄” on the 88-key Piano Keyboard

Piano Keyboard Graphic
Standard Way to Name Octaves
Source: Wikipedia



Aqua Key is Middle C
Yellow Key is A440 (Standard Tuning Reference)

The “G” (indicated by the curl of the Treble Clef symbol) **is the 1st white key to the left of the Yellow Key (G₄ ↓)**
This G is also known as “G₄” because it is in the 4th Octave

The “F” (indicated by the 2 dots of either side of the next-to-the-top line of the Bass Clef) (F₃ ↓)
Is the white key just above the 3 below the keyboard graphic
This F is also known as “F₃” because it is in the 3rd Octave

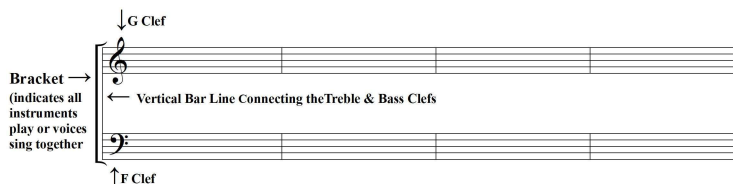
https://commons.wikimedia.org/wiki/File:Piano_Frequencies.svg#/media/File:Piano_Frequencies.svg

22

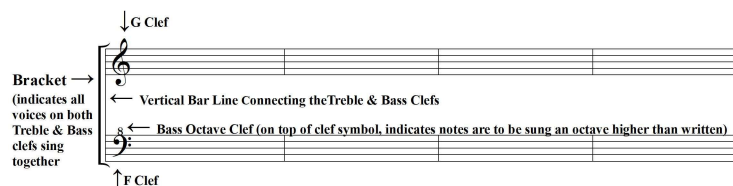
The Grand Staff

has a Treble Clef & Bass Clef

- The Grand Staff:



- The Grand Staff – Women’s BBS:

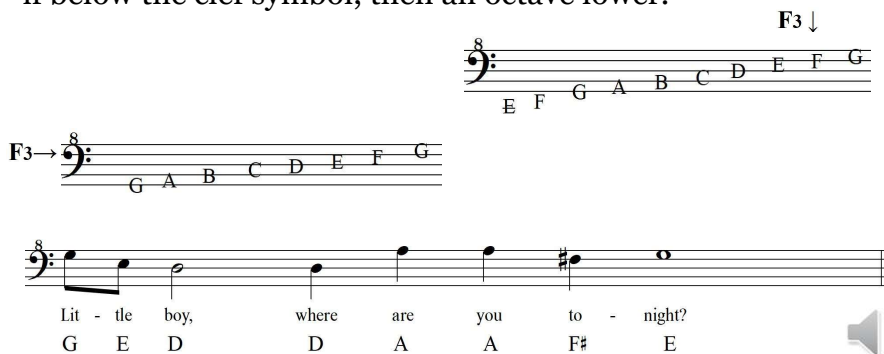


23

Octave Bass Clef

That Little “8” on Top of the Bass Clef Symbol

Octave Clefs are used to indicate music notes are intended to be sounded (sung) an octave higher or lower than written. If the number “8” is above the clef symbol, then an octave higher; if below the clef symbol, then an octave lower.



24

My First Tag on the Grand Staff of BBS

Women's Voices



If we place the Melody of My First Tag on the Grand Staff of BBS so that all 4 Parts are in unison, it looks & sounds like this:

Where Are You Tonight?

Words and Music by Janice Wheeler

Chords: G Em D7 D7 D7 D7 D9 G

1 2 3 4

Tenor Lead

Bari Bass

Lit - tle boy/girl, where are you to - night?

But we don't usually sing in unison in BBS – each of the 4 Parts has a particular vocal line to contribute to create BBS harmony. Next time in **Part 5** . . .



25

Next Time . . . *Part 5*



For each Chord we have chosen for the Melody of My First Tag, we will decide . . .

Which Chord Notes to use for Which Part
&
ASSIGN CHORD PARTS TO VOICE PARTS

See you Next time!

26