

My First Tag



HOW TO WRITE A BBS TAG in 6 PARTS *from BBS Clef Notes*

Part 1 *Where Do I Begin?*

©Copyright 2020 by Janice Wheeler
Prineville, OR 97754
janicejfw@aol.com

1

Presented by Janice Wheeler



- Member of **Pride of Portland Chorus**.
- Faculty Member of **Region 13 & Harmony College Northwest**.
- Coordinator of annual **Region 13 Arrangers WorkShop at HCNW**.
- Coordinator of annual **Tag Writing Contest** cosponsored by **HCNW & North by Northwest Region 13**.
- Recipient of **Tall Timbre Award** from **The Evergreen District of BHS** for "**outstanding contributions to HCNW**".

2

1st Things 1st

What Is A BBS Tag?

3

A BBS TAG IS . . .

- A Short Musical Composition that:
 - ✧ Conveys a universal message of love, friendship, or other emotion
 - ✧ Often contains at least one “tiddlie” to feature a voice part
 - ✧ Is an even number of measures
- Designed to:
 - ✧ End an arrangement – **Coda Tag**
 - ✧ Be fun to sing while practicing BBS skills – **Stand-alone Tag**

4

Stand-Alone Tags

- Are usually 4-8 measures long
- Are easy to learn and sing
- Can focus on skill building for a Chorus
- Can be part of the outreach to the community
- For instance

5

My First Tag

Where Are You Tonight?

Words and Music by Janice Wheeler

Arranged by Janice Wheeler

Tenor Lead

1 2 3 4

Litt - tle boy/girl where are you to - night? Lit - tle boy/girl?

Bari Bass

© Copyright 2018 by Janice Wheeler
Prineville, OR 97754



This is where I finished – but before I got started, I had lots of questions . . .

6

My First Tag in 6 Parts

(each part will answer a question)

- Part 1 - Where Do I Begin?
• *CHOOSE A MELODY & WORDS*
- Part 2 - What's Next?
• *FIND A KEY SIGNATURE & A TIME SIGNATURE*
- Part 3 - What Else do I Need to Know?
• *FIND THE CHORDS FOR THE KEY SIGNATURE*
- Part 4 - Which Chords to use for My Melody?
• *CHOOSE ONE OF THOSE CHORDS FOR EACH MELODY NOTE*
- Part 5 - Which Chord Note to use for Which Part?
• *ASSIGN CHORD PARTS TO VOICE PARTS*
- Part 6 - What About Embellishments?
• *ADD BARBERSHOP FLOURISH & STYLE*

7

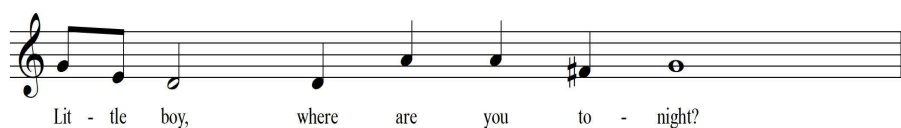
My First Tag – Part 1

WHERE DO I BEGIN?

8

Where Do I Begin? to create a BBS tag . . .

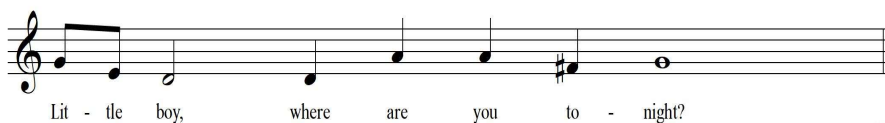
- Begin with a **Melody & Words**
 - ✦ Create your own tune (Melody & Words)
 - ✦ Choose a tune from the Public Domain that you know & like
- For instance – I created my own



9

How I Created My Own Tune

- A universal emotion key to my life is *love and concern for my son*.
- When he was serving with the Army in Kuwait, I often wondered where he was . . . “*Where are you tonight?*”
- The tune (Melody & Words) that came to mind . . .



10

To Create Your Own Tune

- Think about *what's happening* in your life and *what's close to your heart*.
- Then *let your heart guide your mind* to express what's important to you about what's happening in your life.
- When a melody comes to mind, memorize it, plunk it out on your keyboard (or pitch pipe or guitar . . .) and write it down.
- Then add your words *to express that universal emotion*.

11

or . . . Choose a tune *from the* Public Domain

- Public Domain refers to intellectual property rights that belong to the community at large because they are unprotected (or no longer protected) by copyright, trademark, or patent laws.
- So, they are subject to appropriation by anyone.

---- Merriam-Webster Dictionary
- Anyone can *use* a Public Domain work *without obtaining permission*, and no one can ever own that *original work* again.
 - ✦ In the case of songs – the original melody & lyric can be Public Domain . . .
 - ✦ But any adaptations – such as arrangements – created by a person today, can be protected by copyright for the term allowed by law.
 - ✦ For instance . . .

12

You're the Flower of My Heart Sweet Adeline

- The song, "**You're the Flower of My Heart Sweet Adeline**" was first published in **1903**, so it is long in the **Public Domain**.
- Any **adaptation** such as this tag **created in 2020**, however, can be **protected by copyright**:

How We Sang Sweet Adeline!

Words & Music by Janice Wheeler,
Richard Gerard & Harry Armstrong

Arranged by Janice Wheeler

Sweet A - de - line!

Tenor Lead

Bari Bass

Ad lib. How we sang! Sweet A - de - line!

Inspired by the 1903 song, "You're the Flower of My Heart Sweet Adeline"
Music by Harry Armstrong Words by Richard H. Gerard
"How We Sang Sweet Adeline tag" © Copyright 2020 by Janice Wheeler, Prineville, OR
janicejfw@aol.com



13

A Good Man Nowadays Is Hard to Find

- Another song from the **Public Domain**, "**A Good Man Nowadays Is Hard to Find**" was first published in **1917**.
- Harry Buerer used it for his **Award Winning Tag** in the **2019-2020 Tag Writing Contest** cosponsored by HCNW & Region 13:

A Good Tag Is Hard To Find

Winning Tag Category 1 for Women's Voices
2019-2020

Music by Eddie Green

Words by Eddie Green & Harry Buerer

Arrangement by Harry Buerer

Tenor Lead

Bari Bass

For a good tag now-a - days is hard to find. is hard to find.

Inspired by the 1917 song "A Good Man Is Hard To Find" by Eddie Green
"A Good Tag Is Hard To Find" tag © Copyright 2020 by Harry Buerer, Portland, OR
harry.buerer@gmail.com
free use given to all harmony lovers everywhere



14

Recent Article about Public Domain

A recent article that is worth your time to read gives an update on current events in the “Public Domain”:

- ✦ **“For the First Time in More Than 20 Years, Copyrighted Works Will Enter the Public Domain”** by Glenn Fleishman
- ✦ Published in *Smithsonian Magazine*, January 2019
- ✦ <https://www.smithsonianmag.com/arts-culture/first-time-20-years-copyrighted-works-enter-public-domain-180971016/>
- ✦ ***As of 2020, songs first published before 1925 in the U.S. are now in the Public Domain.***
- ✦ You can find public domain songs by searching the internet. **One good source** is <https://digitalcommons.conncoll.edu/sheetmusic/>

15

What's Your Tune?

It's time to . . . **CHOOSE YOUR MELODY & WORDS**

Create or find **Your** own Tune (Melody & Words)
for **Your** First Tag
and then we'll continue to
Part 2 of My First Tag . . .

What's Next?
FIND A KEY SIGNATURE & A TIME SIGNATURE

16