

# N&NW

## North by Northwest Region 13

December 6, 2021

### 2021 Fall InTune issue now available!

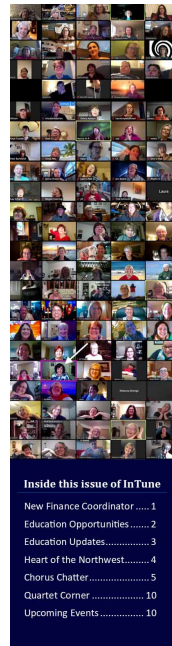
Another issue of *InTune* is now available. Catch up with what's going on in our chapters, region and Sweet Adelines.

Once again, this issue of *InTune* is available as a [flipbook](#), which mimics a paper version. For the best experience, be sure to click on the FULLSCREEN icon in the middle of the newsletter. You can also see this issue in [PDF format here](#).

This issue of *InTune* has articles about...

- A change of Financial Coordinators
- Upcoming educational events
- News from the Education Team
- Chorus and quartet updates
- And more!

The next issue of *InTune* will be published after contest in May of 2022. Previous issues are archived in the Members Only section of our website. Sign in and then visit the Documents section; past issues are stored in the *InTunes and eBlasts* "book."



## InTune

Fall 2021  
A newsletter for members of North by Northwest Region 13

### Farewell, Rhonda; Hello, Jan!

The Region 13 Management Team (RMT) regrettably says goodbye to Finance Coordinator **Rhonda Gould** (left), as she resigns her position effective at the end of the year.

Rhonda began her work with the RMT as an Associate Member and took over the finance position in May 2021. It was a challenging task, and we thank Rhonda enormously for attacking the steep learning curve the position required. She is moving on to undertake new personal and professional challenges, and we wish her the very best.

Also with deep gratitude, the RMT welcomes **Jan Matthews** (left) to the role of Finance Coordinator. She and Rhonda have begun the transition, and Jan will officially take over January 1, 2022. Jan has owned her accounting business since March 1999, specializing in law firm accounting. She joined Sweet Adelines International in July 1993 after moving to Alaska in 1992. She sings lead with Alaska Sound Celebration and Kismet Quartet. She describes herself as both detail- and big-picture-oriented and is excited to be joining the talented ladies of our RMT and serving our Region 13 membership.

Submitted by **Sally Ryerson**, Region 13 Team Leader

It's been awhile, Sweet Adelines! Let's join in song and celebrate the greatest "family reunion" to date at the 2022 International Convention Sept. 12-17, 2022 in Phoenix, AZ. Registration opens January 18, 2022. More information: [sweetadelines.com/Phoenix](http://sweetadelines.com/Phoenix)



## MEMBER INFO UPDATE REQUEST

Please take a moment to log in to the [R13 Members Only](#) webpage to update your member profile information.

If you have any login issues, please contact [Mindy Engelberg](#) or [Diana Jordan](#).

Submitted by **Sharon Stockstad**  
Region 13 Membership Coordinator

**EDITORS: Carol Drew and Sue Middleton**  
[eblast.editor@gmail.com](mailto:eblast.editor@gmail.com)

**REGION 13 WEBSITE**  
[sairegion13.org](http://sairegion13.org)

**CHANGE/UPDATE/ADD MEMBERSHIP INFORMATION**  
Please send your name and preferred email to: [eblastupdate@sairegion13.org](mailto:eblastupdate@sairegion13.org)

Like 0

Tweet

Share this Page: 

powered by 

*~ Jane Swan ~*