

real women.  
real harmony.  
real fun. 

# InTune

North Pacific Region 13  Sweet Adelines International



## Passion

What is it about music that reaches into our hearts like nothing else can? It can tell a story, evoke feeling, cause parts of your body to tap or sway, your heart to lift or calm. In the hands of a gifted arranger, a melody can explode into arrays of color and sensation we can't describe—they must be felt. Now take that melody and arrangement and put it in the hands of someone without passion. You've experienced it before. The music is nice, but something is missing.

We can't get there simply by creating a story for the song. Although a well-crafted story can help, it's not the answer. We are all moved to emotion or action by different stories and in different ways. Why not consider instead, how we want the audience to feel or react throughout the song. Think about the ebb and flow of the story and musical line. Now ask yourself what thoughts evoke that emotion or reaction in you. Be specific. What events in your life, what plays, movies, or other performances inspired you? The specific story will be different for everyone, but the end result will be surprisingly cohesive.

Work the musical details, but take time in every rehearsal to practice passionate delivery. Play with voice inflection. Play with physical movement. Play with facial expression. Passionate performances are built one rehearsal after another. As you become more proficient, you will find that something inside you lights up. A passionate performance will emerge and become your gift to the audience.

If you choose to sing, choose to sing with passion.

*Submitted by LouAnn Hommel*

*Assistant Director and Choreographer, Spirit of Spokane Chorus; Tenor, Pepper*

## Airline Discount for Regional Competition

Carole Bergerson has procured a 5% discount on Alaska Airlines! Use it if you plan to fly to Spokane... every little bit helps, right?!? The discount code is ECMU338 (for Sweet Adelines Region #13), and it has been activated and is available for booking online. To use your discount code, go online to the Alaska Airlines website and input the code when searching for flights (note: by clicking the "?" next to the discount code box after entering the code you can view a detailed description of the rules).

### WINTER 2013 INSIDE THIS ISSUE:

<i>Singing with passion</i>	<b>1</b>
<i>Member matters</i>	<b>2</b>
<i>TAG program</i>	<b>2</b>
<i>Contest information</i>	<b>3</b>
<i>Harmony College news</i>	<b>3</b>
<i>Regional merge facts</i>	<b>4</b>
<i>Harmony Emporium</i>	<b>5</b>
<i>New name</i>	<b>5</b>
<i>Competition info</i>	<b>6</b>
<i>Quartet Corner</i>	<b>7</b>
<i>Chorus Chatter</i>	<b>7-10</b>
<i>Regional events</i>	<b>9</b>
<i>Get SET</i>	<b>10</b>
<i>NAfME Award</i>	<b>11</b>
<i>New RMT</i>	<b>12</b>



Now you can visit us on our Region 13 Fan page, even if you're not a member of Facebook.

Simply visit us at [facebook.com/Region13](https://www.facebook.com/Region13)—no sign-up required—and catch up on all the latest goings-on in North Pacific Region 13.

## Member Matters

### Recognizing Growth!

During our RMT meeting this past weekend, we decided to put in place a system for recognizing not only growth but percent of membership growth over the previous year. Beginning with the May 2013 contest, we will be awarding ribbons to the chorus that has the greatest change in numbers of members and the chorus that has the highest percentage of change. This allows us to recognize not only the large choruses who tend to have the largest number changes but also the smaller choruses whose numbers are strongly affected by even a small number change. So any chorus can win one (but not both!). We have set the cutoff date as January 31 of each year. We're going to honor your hard work at attracting and maintaining membership with a ribbon AND reserved, front row seating at contest! So, congratulations to this year's winners (your award will arrive in the mail before contest and will be announced at kickoff) and good luck to everyone for next year!

### CAL Members Ahoy!

Heads up for Region 24 CAL members: You will soon be receiving a couple of emails from International about the new regional boundaries. On May 1, 2013, CAL members will automatically be transferred to the new region that their city is in. However, CAL members will also be given the option to contact International Headquarters if they would like to be affiliated with a different region. Watch for that email. Here in Region 13, we are gearing up for great changes. We now have 86 CAL members and are looking forward to welcoming all who choose to come our way.



### History Project

Our wonderful Region 13 Historian, Jody Allen, stepped down from the position in September of 2012 after many happy years of service to the region. She has taken on the Membership duties for her chorus and no longer has the time. We're grateful to her for her efforts over the years. We have all seen and loved the pictures she provides for the Longevity Awards at the Thursday night kickoff for contest. But now, we're faced with changing how we take care of archives and have decisions to make about what we can keep, where it should be stored, how we can make it available for the entire region to access, and other ways we can use the information. And, above all, who will be responsible for work involved. I'm putting together a committee to address this. If you would like to participate and help us make these important decisions, call or email me. I'm looking for creative and thoughtful solutions. Help!

*Submitted by Mary Ellen Bartholomew, Membership Coordinator*  
360-477-5471

[hihomerryo@yahoo.com](mailto:hihomerryo@yahoo.com)

## TAG Program Continuing!

Hello, Region 13! It is with great excitement that I am letting you know of a few awesome changes to our very successful TAG Program.

First, we will be renaming it. From now on we will be calling it PEP: Preparing for an Exceptional Performance. That name is from a Region 24 program that is similar to TAG, and it's a great name! It will also be something that our incoming choruses will be familiar with.

Second, and most exciting, the PEP Program (formerly TAG) will be continuing for another year (Jan-Dec 2013). That means if you got a visit last year, you can reapply to have another one this year! And if you didn't get a visit, be sure to schedule one for 2013! Our awesome regional faculty are handpicked by me to meet the needs of your chorus, and are ready, willing, and excited to share their abundant knowledge with you and your chorus!

If you would like to schedule a visit, please visit <http://sairegion13.org/tag-html> and fill out the form. We are working on updating the logo and website, but don't let that stop you from scheduling your chorus visit now!

*Submitted by Nikki Blackmer*

## Getting Ready to Celebrate Region 13

Well, here we go! We are planning such fun for all of you, I can't stand it! We have listened to your comments and questions and are attempting to answer as much as possible! We have pledged to create a shorter time frame for some things and hope that action works for you! More time to PARTY!

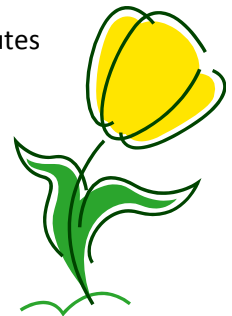
We will be completing the chorus contest in time to have a meal provided for you and served from 5:00 p.m. to 6:30 p.m. at the hotel on Saturday, giving you plenty of time to gather at the Opera House for the Show of Champions from 7:30 p.m. to 9:00 p.m. (with no intermission). We hope all the champions will join us in the audience until their performance time.

There will be a number of surprises at the VERY LOOSE AFTERGLOW which follows this show. There will be a tag room and other hospitality rooms for different activities. More on all of this later! There

will be some tables set up and also we'll have risers... if the mood to sing hits you!

The Show of Champions will have an abbreviated format with shorter performance times:

1st Place Small Chorus: 4-6 minutes  
 1st Place Mid-Sized Chorus: 4-6 minutes  
 3rd Place Quartet: 6-8 minutes  
 2nd Place Quartet: 6-8 minutes  
 1st Place Quartet: 8-10 minutes  
 3rd Place Chorus: 6-8 minutes  
 2nd Place Chorus: 6-8 minutes  
 1st Place Chorus: 8-10 minutes  
 Awards



*Submitted by Sue Hahn, Events Coordinator*

## Harmony College Northwest News



JUNE 21-23, Tacoma

HCNW will be happening in JUNE this year so that people can choose to attend the other SAI- and BHS-sponsored educational events in July. Our focus this year is on visual plans and ear training followed with a healthy side of coaching! We have amazing faculty like Frenzy, Vocal Spectrum, and Momentum quartets, Lea Beverley, Nancy Kurth, Beth Smith, Ryan Heller, Amy Rose, Don Rose, and many, many more you can see on the website at [www.harmonycollege.org](http://www.harmonycollege.org). If you are a quartet, we'll have coaching opportunities for you with all of our amazing faculty. Last year, the Nanaimo men's chorus came and got coached. If there are other choruses who would like some coaching, we can set that up, too! Of course, if you just want to have fun and learn while doing that, we'll have plenty of those classes. While the schedule is still being worked out, some of the more intriguing class titles for this year include "Mixology," "Instant Leveling," "Energize and Harmonize," and two classes with hands-on experience with microphones and sound systems. There is a director track as well as classes for membership chairs, show chairs, and chorus presidents. In short, Harmony College is for anyone who wants to sing, wants to improve, and most of all, wants to have fun! Registration will be opening soon. You can also friend us on Facebook at "Harmony College Northwest." See you in Tacoma JUNE 21-23.

*Submitted by Valorie Osterman*

# The Merge, The Facts—Questions and Answers



It's getting closer to becoming ONE GREAT REGION.

Yes, eight choruses from Region 24 will be joining Region 13 effective, May

2013. We are so excited to welcome our new Sweet Adeline sisters! Have you thought about what this means, and do you have questions regarding the transition? Well, below are some questions and answers that will help you better understand!

## Questions and Answers

**What about 2013-2014 Regional Dues Assessment?** Financial Coordinators Mary Neff and Diana Dahl have developed a workable plan.

Also, for the region being absorbed, all monies remaining in the regional funds will be returned to SAI headquarters where they will be disbursed on a per capita basis to the new regional homes of their membership, depending on the number of members moving into each region.

**Do the directors of the "new" region elect the Directors Coordinator the first year?** Members from both regions are eligible to apply for the position of Directors Coordinator. The Directors in both regions have elected the new Directors Coordinator, Nancy Kurth (Director in current Region 24).

**What about regional dues? Region 13 pays regional dues once a year in May and Region 24 pays regional dues on the individual member's anniversary date. How will Region 24 pay their dues in May 2013 so they are not double paying?** Region 24 choruses and CAL

members will pay Region 24 dues as they currently do through April 2013.

All choruses/CAL members will receive a dues assessment invoice in May 2013. For "current" Region 13 members, it remains the same (chorus member \$36; CAL member \$48). For "new" Region 13 members coming from Region 24, it would be as follows:

For choruses, the invoice will be \$36 for each member with an anniversary date in May; \$33 for each member with an anniversary in June; \$30 for each member with an anniversary in July, and so on (\$3 per month).

CAL members will all be billed in May 2013, but the amount they pay will depend on their anniversary month—calculated as for chorus members (\$4 per month).

Beginning in May 2014, all members will pay the same amount—\$36 per chorus member and \$48 CAL—payable once annually.

If you have any questions, please contact Mary Neff, Region 13 Financial Coordinator, at [maryneff4@comcast.net](mailto:maryneff4@comcast.net).

**Where do the physical assets go? Does Region 24 send materials, equipment, etc., to International for liquidation?** Region 24 will make these decisions. Physical assets may be sold, donated to other 501 (c) 3 organizations, or transferred to other regions.

**Would you please explain in detail how the dissolving region Quartet and Chorus winners in 2013**

**Regional competition will be handled at International (Int'l) Competition? What region will they represent? If that chorus or quartet is being merged into Region 13, will that region have double representation at the Int'l level?** All quartets qualifying for any Int'l Competition during the 2013 Spring Regional Competitions will compete in the 2013 Int'l Quartet Competition. Quartets that will change regions on May 1, 2013, will be introduced as "representing Regions\_\_ and\_\_" (previous and new region home)

All Choruses qualifying for Int'l Competition during Spring Regional Competitions will compete in the 2014 Int'l Chorus Contest. Internationally competing choruses that will be changing regions on May 1, 2013 will be introduced as representing Region\_\_ and \_\_ (previous and new region home).

**With the move from 24 to 13, will that chorus change its chorus number? Part of our chorus number is our regional number. Can we assume we will be assigned a new chorus number by Int'l Headquarters after May 1, 2013?**

Yes, the chorus numbers will take on the new regional number. What was previously 2419 will now be 1319. If there is already a chorus 1319 in the region, then there will be a new number assigned. This reassignment will happen around May 1, 2013, depending on the database and HQ staff assignments

Feel free to contact me with more questions: [pgmartin1@comcast.net](mailto:pgmartin1@comcast.net)

*Submitted by Patty Martin,  
Transition Coordinator*

## Exciting Chorus Fundraising Opportunity!

Would your chorus like to earn some extra money? Be the host chorus to Harmony Emporium during convention weekend!

We're trying something new this year to revitalize Harmony Emporium and help a chorus in the process.

The Harmony Emporium host chorus would be responsible for contacting potential vendors, designating vendor space, and serving as the primary contact for the vendors and Competition Steering Committee.

In return for this work, your chorus would earn a handsome portion of the receipts from booth space rent!

Harmony Emporium is a popular shopping venue for Sweet Adelines between contests and classes. It will be held in the Ballroom Foyer of the Double Tree Hotel, May 16–18, 2013.

If this is something your chorus is interested in doing, please contact Mary Neff, RMT Finance Coordinator, at [maryneff4@comcast.net](mailto:maryneff4@comcast.net) or

360-455-8943, for more details.

### Finance Tip When Ordering/Purchasing Products or Services

When advance ordering products or services for your chorus or quartet, there are steps you can take to safeguard your financial investment:

- 1) Avoid paying the full amount up front. Sometimes a deposit may be required, but it is best to withhold total payment until all the goods or services have been received in satisfactory condition. This is especially important when dealing with a vendor unknown to you.
- 2) Pay with a credit card whenever possible. If the vendor fails to give you the products you paid for or issue a refund, you can request a refund through the credit card banking institution.

Keeping the financial side of shopping in mind can help ensure the whole experience is positive!

*Submitted by Mary Neff*

## Going to Hawaii for 2013 Convention?!

Alaska Sound Celebration Chorus has arranged for Alaska Airlines to give a 5% discount on flights to Hawaii from anywhere in the US and Canada. It is valid Nov. 1-13, 2013. There are other restrictions which can be found by clicking the "?" next to the discount code box after entering the code when booking online. You can also use the discount code by calling Alaska Airlines Group Desk; however, a \$15.00 per person ticketing fee will apply. The code is ECMU408.



## We're Dreaming of a New Name

Region 13 is growing and evolving. International has decided to identify regions by name, not number.

YES! It is definitely time for a NEW NAME for our blossoming region.

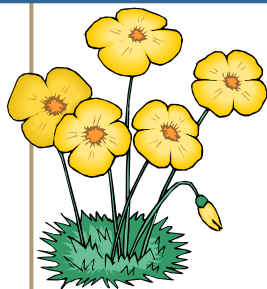
Mary Ellen Bartholomew, Membership Coordinator and Jo Sahlin, incoming Marketing Coordinator are dreaming up a region-wide contest to help select our new name.

The RMT would like to move away from a geographic moniker for our region, and explore

who we are as singers, performers, and people. What do we love, value, and enjoy about this "hobby"? Our goal is to have the MOST AWESOME regional name ever to be announced from the international stage next November in Hawaii!

So get creative. Talk with your friends. Get your competitive juices flowing. Stay tuned for more details about the contest and how to enter. And... Start Dreaming!

*Submitted by Pat Breen*



## Housing for Region 13 Competition

May 15-19, 2013  
DoubleTree by Hilton,  
Spokane WA

It's time to celebrate Region 13! The web link for reservations at The DoubleTree Hilton Hotel in Spokane is up and running through [this link](#) or by calling the hotel at 509-455-9600 and identifying yourself as a Region 13 Sweet Adeline.

Rooms are set aside for our Region 13 Convention and Competition for each night. Book early to get your desired room. Your credit card is needed to secure a reservation, but will not be charged until the week of competition. Please have only one person make the reservation for each room.

The rates are:

2 double beds/2 queen beds/1 king bed: Single/  
Double: \$125 Triple/Quad: \$135

1 king bed, premium: Single/Double: \$145

2 queen beds, premium: Single/Double: \$145 Triple/  
Quad: \$155

Premium rooms are the corner rooms of each wing on each floor and have more space.

The current tax rate is 12% plus a \$2 charge per night. Reservations need to be made by April 16 to get these rates. Changes to your reservation must be directed to the hotel. There is a 72-hour cancellation policy. If you cancel your room after that, you will be charged for one night. Booking through the DoubleTree Hilton helps ensure that our region does not accrue extra costs for using hotel meeting space.

Check in time is 3 p.m. and check out is at noon.

Parking is \$12 per night and will be billed to your room. Valet parking is \$22 per night. Some wheel chairs are available at the hotel. You will need to reserve one or ask for a list of local vendors.

A contact person is needed for each chorus to make arrangements for meeting/rehearsal space and meals. Please e-mail your chorus contact name to Judy McMillian, Housing Chair. Information with breakfast or lunch menus and meeting space will be sent to that contact person.

Contact me if you have questions.

*Submitted by Region 13 Housing Chair,  
Judy McMillian, [judymcmillian@msn.com](mailto:judymcmillian@msn.com)*

## Competitor Registrations

As your Events Coordinator, I have been asked by our International Headquarters to contact all the Quartet and Chorus potential competitors to remind them to make sure they are registered for contest in a timely fashion, so here I am!

The following groups have registered for inclusion in the ORDER OF APPEARANCE DRAW on March 25:

Choruses:  
a capella joy—Pacific Sound  
Jet Cities—Rolling Hills  
Spirit of Spokane

Quartets:  
Champagne—Moonglow  
Kalliope—Yahtzee—Q-Topia  
The Four Get Me Nots—Pepper

I'm waiting with bated breath for the rest of you:

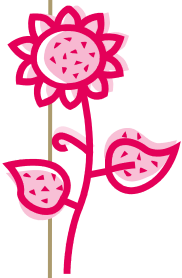
Choruses:  
Blue Mountain—RiversEdge  
Couer d'Alene—Seattle Shores  
Fairbanks Frontier  
Grand Olympics—Kitsap Pines  
Harmony NW—Seattle Shores  
Inland Harmony—Voices NW  
Mountain Melodies—Olympia

Quartets:  
Amore—Appletini—Aspire

Backbeat—Blueprint—Jest  
Blended Essence—Delighted  
Desert Edition—Diamond Girlz  
Zest—Columbia Connection  
Mischief—Foreign Exchange  
Full Tilt—Hot Apple Pie—Monaco  
Impromptu—Lip Sync—Nitelife  
Sunbreak—Northern Attitude  
Radiations Recycled—Tag Time  
Top of the List—Vivace Voca

Entry deadline is March 18 for quartets, March 19 for choruses.

*Submitted by Sue Hahn,  
Events Coordinator*



## Region 13 Chorus Chatter

### Alaska Sound Celebration Chorus

Alaska Sound Celebration's Open House was a hip-swinging success. Members and the 12 guests who attended were treated to a demonstration and lesson on traditional Hawaiian dancing by Kim Wilcox. "Our Open House was billed as a last chance to join for Hawaii," says ASC Membership Coordinator Carol Selkirk. "We handed out leis to welcome our guests, and later gave them the chance to try the hula. We heard of the importance of the hands in helping to tell the story, describing for example the ocean or the winds, even a canoe."



It's the second time Kim has visited Alaska Sound Celebration as the chorus prepares to represent Region 13 in Hawaii in November. If you plan on attending International, make sure you have a go at the hula in Honolulu!

*Submitted by Sheena Kaighin*

### CAL Corner

We currently have approximately 90 members in

Region 13 who are Chapter-At-Large. These are treasured members who, for a variety of personal reasons, have chosen to not be affiliated with a local chapter, but still wish to remain active in the region. Many of our CAL members serve on committees, including (but not limited to!) three generous women who serve on our Regional Management Team! Katy Hawley (Marketing Coordinator), Mary Ellen Bartholomew (Membership Coordinator), and Sue Hahn (Events Coordinator) are three hard-working CAL members who love Region 13 and just never stop giving. We appreciate them so much! And that's just three of our CAL members! To my knowledge, at least 30 of our members are contributing their time to Region 13 in quartets, faculty positions, Ovation membership, Regional Management Team, and on a multitude of committees. That number is probably higher. We also have members who can't contribute time, but who support our region by remaining CAL, paying their dues, participating in events, going to local chapter shows, and supporting their best friends who are currently performing in quartets and chapters. And of course, I want to make sure I honor our current CAL SOLID GOLD members (those who, at the completion of 2012, have been a member of Sweet Adelines International for 50 or more years!): Dena Adams, Mary Ann Colgan, Lois Formell Dye, Anita Gohl, Dolores Mode, and Zoe Thompson. I always get tears in my eyes when these beautiful, tenacious, and talented women are honored at regional convention. I will have *(continued page 8)*

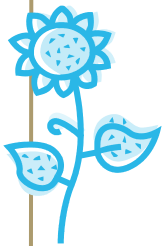
## Quartet Corner

Frenzy would like to send a huge thank you to Region 13 for your love and support, leading up to and in Denver. We could not ask for a more supportive region! We were obviously thrilled to walk away with our 4th place medals. Region 13 Rocks! As you may have heard, Kay has made the difficult decision to temporarily step away from the quartet due to medical reasons. As her quartet-mates, we fully support Kay in her decision to make her health



the most important priority, although we will miss her greatly. We are very excited to introduce the newest addition to our Frenzy family: the incredible, amazing Melissa Pope! Formerly of Journey and Crystal Clear quartets, and Song of Atlanta Chorus, Melissa now lives in Kirkland, WA and is a great tenor fit for us for our journey to Hawaii! We are excited for what this next year will bring and we thank you all for your support along the way!

Love, Anne, Nikki, Judy, Kay, and now Melissa!



## More Chorus Chatter ...

*(CAL continued)*

to live to be 85 to join the SOLID GOLD club in Region 13! To all of our CAL members – we LOVE you, we NEED you, and we

TREASURE you!

*Submitted by Cris Conerty*

### Coeur d'Alene Chorus

In October, the [Coeur d'Alene Chorus](#) offered local women an opportunity to spend eight rehearsals learning Christmas songs, and then perform with the chorus at our Christmas program. We entertained our guests that first night with Christmas songs, all decked out in our Victorian caroling costumes. The response was excellent, with seven women attending, and ultimately six women completed the rehearsal schedule and performed with us on December 3 to a sold-out audience at the beautiful Presbyterian Church. The guests assembled their own costumes and hats for the event, and thoroughly enjoyed the entire experience; two have since become members!



In conjunction with SAI Global Open House, Coeur d'Alene Chorus hosted another guest night January 14. Seven guests attended and played casual trivia games, interacting with members. Co-Director Melodie Hays gave brief histories of SAI and CDA Chorus, Co-Director Sally Wallace taught a short vocal production lesson, and then members and guests learned a tag together. Six guests returned the following week—the universal comment was how friendly and relaxed the atmosphere was, and how welcome they all felt. Several guests are still attending rehearsals and have expressed interest in membership—a most successful venture!

*Submitted by Lori Gessner*

### Jet Cities Chorus

Bye-Bye 2012 and Bring-It-On 2013

The final two months of 2012 found our Jet Citizens performing in Seattle, Puyallup, Federal Way, and Tacoma for different holiday events. We enjoyed repeating our performances of last year singing at the Victorian Country Christmas Fair and also once again setting the musical holiday mood for the special tree lighting ceremony for the City of Federal Way. (Where the picture below was taken).



*One of Jet Cities Chorus' many quartets, "Mischief", spreading some holiday cheer. Pictured left to right are: Sue McBride (T); Sue Middleton (Bs); Phyllis Domingo (L); Debbie Stokes (Br)*

Some new ladies who had been visiting [Jet Cities Chorus](#) as part of our Fall POP (Performance Opportunity Program) joined us on stage for a couple of special holiday performances in Seattle and Tacoma where we were guests on the famous Illumni Men's Chorale holiday shows. That was great fun!

We are looking forward to another fabulous year in 2013. Our first production for the new year was putting on our 9th Annual Sweetie Pie Social Event on February 10. This year's theme was the "Science of Love." You didn't have to be a rocket scientist to enjoy the winning combination of Music, Pie, Love, and Laughter. It was a great recipe for a fun afternoon. We are looking forward to more musical appearances in 2013, including competition in May. Bring-it-on!

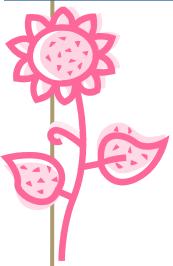
*Submitted by Mary Butschky*

### Pacific Sound Chorus

[PSC's](#) Guest Night/Open House

We welcomed 12 guests on January 22 and 29. Email *(continued page 9)*





## Chorus Chatter Continues!

(PSC continued)  
 invitations were sent and social media were alerted under the banner of "Like to Sing? SWEET!" Guests came for our Vocal Education series, lasting through March. Anyone joining the chorus has their first month's dues waived. PSC members who bring two new members into the chorus will also receive one month's free dues.

Guests received red folders containing a welcome letter, Susan's bio, and copies of our new songs. They stood next to a riser buddy singing the same part. Physical warm-ups were led by Head Choreographer, Dee Neff. Vocal warm-ups were led by Music Team Leader/SAI Sound Judge, Beth Smith. Master Director Susan Kegley introduced guests and facilitated vocal instruction for all. Susan and her Music Team sang the two new songs, which everyone is learning together.

After an hour, guests were dismissed, but could stay for the remainder of PSC's rehearsal. All chose to stay! (We LOVE an audience!) Refreshments were served, and everyone made merry. We have about 10 singers planning to audition. Whoo hoo!

*Submitted by Carol Drew, PSC Membership Manager*

### RiversEdge Chorus

The Christmas season was a real joy for our chorus. Since we had decided last summer we wanted to entertain during the holidays, we started refreshing our Christmas repertoire and added a couple of new songs. Our performance committee made lots of contacts, and we secured several performances (8 to be exact). We put together a 45-minute program including a skit and lots of interactive things with the audience. We rehearsed it well, so we were solid in

what we were doing. Our first performance was a smash, so we realized we had a great little show. We were very well received at each performance, and we all had as much fun as the audiences did, along with putting some money in the chorus account. All in all, it was a huge success, and several places have contacted us to do repeat performances for Valentine's Day, Mother's Day, and several more dates into the summer. So, we are now working hard on performances for those dates. The reception we received wherever we performed has energized the chorus and made us work even harder to be the best little chorus we can be!

*Submitted by Mary Ann Milette*

### Seattle Shores Chorus

[Seattle Shores Chorus](#) is alive and well! In fact, we are REALLY on the go!!!

Losing a director right after competition in May was surprising but with three people to share the temporary directing responsibilities, the chorus continued full speed ahead. A director search was started and with the help of Patty Martin, Region 13/24 Transition Coordinator, we adopted a search strategy. Our new director is Bonnie Jeanne Massey, a 25-year veteran of SAI. She plans to take advantage of as many educational opportunities as possible, including the Director Certification Program.

From June through December we sang TWELVE performances. We have a wonderful "bookie" in Trudy Tankus who has gone crazy making arrangements for 15 performances thus far for 2013. The chorus does not plan to compete this year but we're looking forward to competitions that will include our sisters from Region 24.

On May 4, Seattle Shores will be 60 years  
*(continued page 10)*

## REGIONAL EVENTS

### 2013

#### MARCH

**March 1: Alaska Sound Celebration Melodrama**  
 Don't miss ASC's Melodrama during Anchorage's Fur Rhody! This will be the chorus' 23rd year! Tickets sold through [Center Tickets](#)

#### APRIL

**April 6: Gold Country Quartet Showcase** Keep Saturday, April 6 open for a fun night in Portland! Evening also includes raffle prizes and refreshments. Contact [Kathy Scheel](#) for tickets. Is your quartet interested in performing? Contact [Shirley Price](#).

**April 25-28: Region 24 Convention** in Boise, Idaho

#### MAY

**May 16-19: Region 13 Convention** in Spokane, WA

#### JUNE

**June 7-14: Buzz Through Alaska** Hop on board a cruise with the Buzz quartet; sing, perform, and learn together, all while cruising along the beautiful Alaskan coastline! [Click Here](#) for more details.

**June 21-23: Harmony College Northwest** [Click Here](#) for info

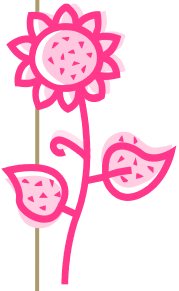
#### JULY

**July 11/13: Harmony Explosion** Registration is now open. Students ages 12-21 can register for the 3 day camp [Here](#).

#### AUGUST

**August 8-11: SET with Kim Hulbuert** location to be determined

[Click here to see more upcoming regional events!](#)



## Additional Chorus Chatter

*(Seattle Shores continued)* old and we plan to celebrate this significant milestone and hope many of you will join with us.

Please watch for information coming as that date draws near. We'd love to see you all.

Yes, Seattle Shores Chorus IS alive and well!

*Submitted by Linea Crolly*

### Sound Harmony Chorus

[Sound Harmony Chorus](#) is a prospective chorus that started in June of 2012. Under the direction of Judy Cooper, it has grown from 7 to 12 members with intent of becoming a fully chartered Sweet Adelines chorus within the next year. Judy brings a wealth of experience to the prospective chorus as a long-time director, choreographer, and quartet singer. She is a dynamic and engaging person and we are truly lucky to have her as our director. The current members are comprised of enthusiastic women of all ages and

levels of singing experience. The focus of this group is learning the barbershop craft while having fun and maintaining fellowship.

Sound Harmony Chorus has held guest nights and has attracted potential members from around the community. Our rehearsal space is conveniently located in Ballard in the Seattle Creative Arts Center at 2601 NW Market Street, Seattle, WA 98107. We welcome members from the Sweet Adelines community to visit us on Mondays at 6:30 p.m. to share in this venture and to help bring to fruition a new chorus in the region. We are excited about this challenge. For further information please go to [soundharmony.org](http://soundharmony.org) or contact us at [soundharmonychorus@gmail.com](mailto:soundharmonychorus@gmail.com).

*Submitted by Linda Bergvinsson*

### STAR Chorus

[STAR Chorus](#) members, numbering 50+ and growing, represent at least 16 of our region's choruses. Members are currently practicing either individually or with their local STAR

friends in preparation for performing during convention kickoff, Thursday evening, May 16. They will present "Sweet Adelines: Then and NOW" with "When I Take My Sugar to Tea" and "Why We Sing," along with the beloved "Harmonize the world." There is still time for any and all Region 13 and 24 members to access the music and learning tracks from the Members Only area of the regional website, learn the songs, and then join STAR on the risers. Visit the STAR Chorus page and watch for the April eblast for details. You may also email [Melodie Hays](mailto:Melodie Hays) with any inquiries. Join the harmony, join the FUN!!

*Submitted by Melodie Hays*

### Voices Northwest Chorus

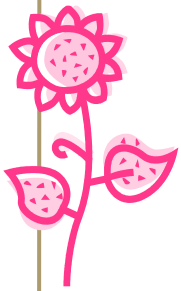
What an energizing holiday we experienced at Voices Northwest! After moving our rehearsal venue to Monroe in the fall, we have been working to establish stronger ties to this community and to build our membership base, especially in this area along the Highway 2 corridor. *(continued page 11)*

## Ready? GET SET! August 8-10, 2013 in Yakima, WA, at the Convention Center

SET this year will feature the amazing Kim Hulbert Vaughn. To start the weekend off with a bang, we will begin with a Thursday night reception with light appetizers. Friday will feature many classes to choose from, including (but not limited to!) a Front-Line Only Director Track, an Assistant Director Track, and a Quartet track. Every singer will find something to challenge them! We will have PVIs and quartet coaching by members of our regional faculty and a wine tour available for a small extra charge. Saturday will be classes all day with the one and only Kim Hulbert Vaughn sharing everything she knows, followed by a dinner and afterglow. Due to light attendance in the past years, there will be no classes or International Bound coaching on Sunday. There will be some PVI spots open on Sunday.

Mark it on your calendar now! Not only will it be an amazing weekend of education, it will be the first time the NEW Region 13 is all together! What a way to celebrate!

See you there! Questions? Email [Nikki Blackmer](mailto:Nikki Blackmer), Education Coordinator for Region 13.



## Some More Chorus Chat!

*(VNW continued)*

We kicked off the holiday season in style with a performance on an Argosy Cruise ship out of Lake Union, and despite germs flying everywhere, we successfully entertained our audience and enjoyed a wonderful cruise, spreading the joy of music as we sailed.



ZEST quartet on the Argosy Cruise with VNW

We serenaded at the Christmas Tree Lighting Ceremony in downtown Monroe, and also participated in a community hayride and carol-singing event. After a fun time caroling at the Seattle Premium Outlets in Marysville, we capped off our holiday season with a Songs of Celebration performance at our Monroe venue, with guest quartets and some sing-along music along with Santa and the elves distributing candy canes. The highlight was that our collection of food-stuffs for Sky Valley Food Bank was too vast, and they

had to bring a bigger truck the next day to pick up our donations... YAY!! The season schedule was full, fun, and festive, and our chorus gained more polish with every performance.

NOW we are in the "grab the golden ring" mode, and have eagerly grown our skills with coaching sessions



from Zoe Thompson and Dixie Dahlke. Looking forward to more coaching with Carole Kirkpatrick... we are eager to raise our scores and ring our chords!

Marketing in our new neighborhood has paid off with an increasing number of visitors that we hope will be bitten by the barbershop bug. We are **Celebrating our Past, Present, and a wonderful Future!**

*Submitted by Nancy Rabel*

## SAI/National Association for Music Education Award

The International Board of Directors has requested that Region #13 Management Team submit recommendations for the Sweet Adelines Int'l/National Association for Music Education Award (SAI/NAfME Award). This prestigious award will be presented at the International Convention in Honolulu, Hawaii.

We frequently hear reports of members who devote their time and energy to promoting the study of music, including the Young Women in Harmony program, in their local areas. We would love to see these members recommended so they are recognized for their efforts. You may submit more than one recommendation. Qualifications for the NAfME (formerly MENC) Award recipient are as follows:

Qualifications for the NAfME (formerly MENC) Award recipient are as follows:

- Recipient must be a music educator and a member of NAfME
- Recipient must be a member of SAI
- In addition, through her talent and dedication, the recipient must have made outstanding contributions to the furtherance of music education in public and/or private schools by promoting the barbershop style as an American art form.

Please submit your recommendations for this award to [Sally Wallace](#) no later than May 1, 2013.

## REGIONAL MANAGEMENT TEAM



**Team Coordinator**  
Sally Wallace  
208-772-3379  
[thewallaces1@frontier.com](mailto:thewallaces1@frontier.com)



**Communications Coord.**  
Pat Breen  
206-349-7128  
[breenpa@comcast.net](mailto:breenpa@comcast.net)



**Directors Coordinator**  
Peggy McBride  
907-333-2691  
[asc@gci.net](mailto:asc@gci.net)



**Education Coordinator**  
Nikki Blackmer  
425-821-5758  
[ajoyfulsinger@yahoo.com](mailto:ajoyfulsinger@yahoo.com)



**Events Coordinator**  
Sue Hahn  
907-272-4245  
[suellenhahn@gmail.com](mailto:suellenhahn@gmail.com)



**Finance Coordinator**  
Mary Neff  
360-455-8943  
[MaryNeff4@comcast.net](mailto:MaryNeff4@comcast.net)



**Marketing Coordinator**  
Katy Hawley  
425-830-4493  
[katyhawley@comcast.net](mailto:katyhawley@comcast.net)



**Membership Coordinator**  
Mary Ellen Bartholomew  
360-457-1791  
[hihomerryo@yahoo.com](mailto:hihomerryo@yahoo.com)



InTune is published three times a year for members of North Pacific Region 13, Sweet Adelines International.

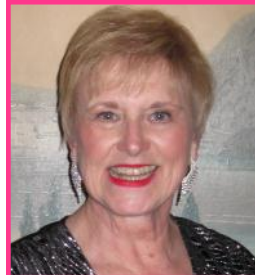
For questions or comments, please contact Kelly Hobson  
[kelly.s.hobson@gmail.com](mailto:kelly.s.hobson@gmail.com)

The next issue will be distributed in June; **deadline is June 9, 2013.**  
Send articles to Grace Rawsthorne  
[g\\_rawsthorne@hotmail.com](mailto:g_rawsthorne@hotmail.com).

Copyright 2013; all rights reserved.  
Check us out on the web: [sairegion13.org](http://sairegion13.org)

## Meet the New RMT!

The Region 13 Management Team is welcoming four new members in May, two from the current R13 area, and two from our new area in Region 24.



### Nancy Kurth, Directors Coordinator

Nancy is the director of Northwest Harmony Chorus in Vancouver, Washington and baritone section leader in Pride of Portland Chorus. She has been a member of Sweet Adelines for 44 years, and brings a wealth of experience in both chorus and regional leadership as well as being a regional faculty member. Nancy lives in Tigard, Oregon, is married and has 2 sons and 4 grandsons. Husband, Dave, an avid supporter of Nancy and Sweet Adelines, has attended the last 18 International Conventions....and he always picks the winner!



### Danie Stiles, Finance Coordinator

Danie is a tenor section leader in Pacific Sound Chorus. She has been a Sweet Adeline for 25+ years and started singing with her family in church choir in grade school. Danie is a CPA, serves on the finance team for Pacific Sound Chorus, owns her own accounting business and works as a controller for a construction firm. Danie has been married to Jim for 40 years, and has 3 children and 11 grandchildren, ranging in age from 2 to 19 years.



### Judy Galloway, Events Coordinator

Judy sings bass with Harmony of the Gorge Chorus in Hood River, Oregon and with Pride of Portland. She is a 21-year member of Sweet Adelines, and has shared her passion for this organization in many ways over the years, including as assistant director, historian, marketing and membership coordinator at chorus and regional level, webmaster, and regional faculty member. She is very proud of being honored with the Region 24 Rose Achievement Award in 2007. Judy lives in Hood River with her husband of 43 years, Ken. She has 5 children and 15 grandchildren, and is a self-proclaimed computer geek.



### Jo Sahlin, Marketing Coordinator

Jo sings tenor in the Olympia Chorus. She first joined Sweet Adelines at the tender age of 14, and has sung with four choruses over the years and competed at international in Calgary with Spirit of Spokane Chorus. Jo is a recent graduate from Evergreen College, with a B.A. in Communications, and works as a blog editor. She is an avid blogger, with a passion for all types of music, cooking and anything French.