

real women.  
real harmony.  
real fun.

# InTune

North by Northwest Region 13 Sweet Adelines International



## Contest 2014 in Review

### Summary Comments from the Judges

Each year contest judges give the region summary observations about the chorus and quartet competitors—kind of like a score sheet for the region. Of course these comments are general observations and do not necessarily apply to an individual chorus or quartet. But they do help us as a region to focus our education efforts for the coming year. Choruses and quartets may want to use these summary observations in conjunction with their own score sheets.

#### Here is what the judges said about the chorus competition:

**Doing well:** posture, creativity, entrance/break/exit

Lower scoring choruses: good basic foundation in vocal skills

Higher scoring choruses: good vocal skills, song choices

**Focus improvement efforts on:** consistent vocal skills, section accuracy, better understanding of backbeat, finesse moving through dynamic changes, more freedom (risk and artistry are the goals), directors stepping aside and letting go, how to take a song apart/put together for emphasized lyrical message

Lower scoring choruses: how to develop an interpretive plan, more vocal basics, layering visual plan to enhance performance, costuming and make up/grooming

Higher scoring choruses: more characterization and freedom

#### Here is what the judges said about our quartet competition:

**Doing well:** posture, note accuracy, song choices, interpretive plan, good but inconsistent vocal skills

**Focus improvement efforts on:** consistent vocal skills, matched resonance/space, air-driven sound, consistent tempo, more freedom, understanding embellishments, how to take a song apart/put together for emphasized lyrical message, creating a storyline, explore musicality and

*(continued bottom of page 2)*

### SUMMER 2014 INSIDE THIS ISSUE:

Contest 2014	1
SET 2014	2
New Zealand Invitation	3
SET Scholarships	3
RMT Membership Update	4
Novice Director Award Winner	4
RMT Update	5
RMT Marketing	6
Contest Raffle	7
New Master Director	8
First Chorus Open Division Winners	8
Chorus Chatter	9-13
YSF Fundraiser	13



Now you can visit us on our Region 13 Fan page, even if you're not a member of Facebook.

Simply visit us at [facebook.com/Region13](https://www.facebook.com/Region13)—no sign-up required—and catch up on all the latest goings-on in North by Northwest Region 13.



## SET 2014: What's the Buzz?

What is all the buzz this year about SET (Summer Enrichment Training)? Our annual summer education event will be here soon. Our guest faculty is—The Buzz! You will want to be in Yakima for SET on August 21-23!

Events start Thursday afternoon with an optional On-Foot Complimentary Brew and Wine Tasting Tour followed by an evening kick-off reception with light hors d'oeuvres. Classes start early Friday morning with our regional faculty. There are separate tracks for frontline directors and assistant directors/music leaders. And there are lots of other classes to fit everyone's interests. Also available for a small additional fee are PVIs and quartet coaching. On Friday evening The Buzz will teach us a new song. They will be teaching us how to learn music quickly, so we will get our

music that evening. There are no learning tracks or music in advance. All day Saturday is with The Buzz... general sessions and break-out sessions. Saturday evening there is a fabulous show (open to the public) featuring The Buzz and our own awesome Region 13 quartets. We end the day with great fun—The Great Lip-Off (a lip sync contest). So get your pick-up quartet or small ensemble together and let the creative juices flow. More information is coming soon.

In the meantime, first things first...get registered at <http://sairegion13.org/events/set.html>. Specific registration questions can be sent to Kathy Domkoski, SET Registrar, at [region13set@gmail.com](mailto:region13set@gmail.com). Reserve your spot now for the education event of the year.

**SET—August 21-23—Yakima—with The Buzz!**

*Submitted by Debra Aungst*

### Director Certification Program Testing

Testing for the Director Certification Program (DCP) is being offered at Harmony College Northwest in Tacoma on June 21 and again at Summer Enrichment Training in Yakima August 22-23.

If you are enrolled in the DCP and are interested in testing either of those times, contact Judy Beckman to make arrangements prior to those testing dates.

If you'd like to enroll in the DCP, you may contact any of the following:

Nancy Kurth, Directors Coordinator, [nkurth@msn.com](mailto:nkurth@msn.com)

Debra Aungst, Education Coordinator, [aungstd@gmail.com](mailto:aungstd@gmail.com)

Judy Beckman, DCP Coordinator, [heyjude4@live.com](mailto:heyjude4@live.com)

*(continued from page 1)*

vocal characterization, costume & make up/grooming that is too casual (sing-out vs. professional entertainer), costume (pants/tops) is too tight, make up/grooming is unsophisticated and messy.

We have much to celebrate as a region. We are doing so many things well! And by using our regional score sheet along with our individual score sheets, we have a map to focus our journey's efforts for the coming year!

*Submitted by Debra Aungst*

## New Zealand Invitation

Pride of Portland is going international—but not the way you'd expect. Yes, International Competition is just months away, but in 2017 Pride will travel halfway around the world to join Sweet Adelines in New Zealand. And you are cordially invited to come along!



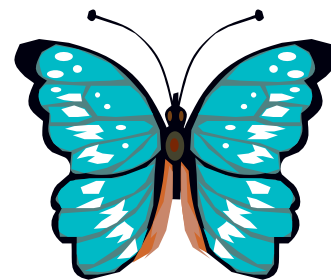
Have you ever dreamed of visiting the land down under and exploring the real "Middle-Earth"? New Zealand is packed with stunning vistas and diverse cultures, yet with a population of just four million, it is gloriously uncrowded.

Kate Veeder, a Kiwi Sweet Adeline, has extended a once-in-a-lifetime offer to visit and perform with "New Zealand's best": Greater Auckland, Waikato Rivertones, Wellington City, and Christchurch City choruses. Kate and her husband will organize a personalized tour of their homeland, providing insider tips on where to go and what to see. Experience hidden treasures only a local would know.

You must be a Sweet Adelines member in good standing though you do not have to become a member of Pride of Portland. You must be willing to learn music and attend special rehearsals as we get closer to our departure date.

Interested? See the Events page on our website ([prideofportland.org](http://prideofportland.org)) for a FAQ sheet and proposed itinerary or contact Patty Severns at [prideofportlandchorus@gmail.com](mailto:prideofportlandchorus@gmail.com).

*Submitted by Jo Brehm*



## SET Scholarship Awardees

Congratulations to Cora Valadez and Lindsey Eklund! Both women received scholarships enabling them to attend SET (Summer Enrichment Training) in Yakima on August 21-23 this year.

Each May and November a scholarship is awarded to a deserving North by Northwest Region 13 member who is seeking education opportunities offered by North by Northwest Region 13 or wishes materials/tools offered by Sweet Adelines International.

Cora is a member of the Olympia Chapter and is active in leading other singers through coaching,

PVIs, and being a section leader. She wants to utilize the information she gleans to support her own vocal development and that of others.

Lindsey is a member of the a cappella Joy Chapter. She is looking forward to attending SET for the first time and working on her own vocal skills.

Cora and Lindsey are learners. We are thrilled to award each of them a scholarship to support their educational endeavors! Congratulations, Cora and Lindsey!

*Submitted by Debra Aungst*



## Update On Membership

Region 13's RMT met the first weekend in June in Vancouver, WA and we had a very productive meeting. I want to thank all the choruses that sent in reports on what they have planned for the rest of this year. Your RMT really enjoys reading the reports and hearing what you are all working on in your chorus lives. It seems that everyone is very busy and has some great things planned for the year. I strongly encourage you all to attend SET. It is an awesome, fun, and educational weekend with great faculty leading the classes and we have a Sweet Adeline International Champion Quartet, The Buzz this year. This is a great opportunity to learn from the best. Let's all do our part to make this the largest attended SET ever! We also have a Prospective Chorus in Yakima. They have 20 members and are just starting to work on reaching their goal as a chartered chorus, so please offer them encouragement and welcome them to our awesome region.

Thanks to all the Presidents/Team Leaders who attended the Presidents Forum at competition in Spokane this year. I have heard some good comments and we will be offering this Forum at

competition again in 2015. It is a great time to meet your peers and find out how other choruses handle membership drives, fundraisers, etc.

Be sure that you honor your members who pass away by sending an article to the InTune and also to International. There is always an In Memory list in the Pitch Pipe.

Does your chorus do exit surveys when members leave? This is a great way to find out why members leave and also learn things that maybe your chorus can do differently. Always send in the Resignation of Membership Form or Member Transfer Form to International—it really helps to keep the records up to date. These forms can be found on the International website in the Document Center.

You can call on me as your Membership Coordinator any time for help with anything that has to do with membership; the rest of the RMT members are also available to help answer questions or whatever you may need. We are only a click or phone call away!

*Sharon Stockstad, Membership Coordinator*

## Novice Director Award Winner

Janelle Peck (*see photo, Janelle is on the right*) stepped up as Co-Director of the Coeur d'Alene Chorus in January 2014. She never dreamed she could love something more than singing, but that is exactly how she feels about directing.

Janelle joined the Sweet Adelines in 2003 and was a member of Region 11's Channelaire Chorus for three years prior to moving to Idaho. After a short break from barbershop, she joined the Coeur d'Alene Chorus in 2010 and never looked back.

"I am so fortunate to sing with the most amazing group of women. Their enthusiasm and encouragement is what makes me love being a

Sweet Adeline the most. I could not do what I do without each and every one of them, but especially my co-director, the beautiful and talented Melodie Hays, and my mentor, the fabulous Sally Wallace."

When she is not with her chorus sisters, Janelle is an avid soap-maker and enjoys living on the family ranch with her wonderful husband, Nick.

*Submitted by  
Nancy Kurth*





## Update from Your New RMT

Welcome and thank you to all new and returning Chapter Board or Management Team members.

This is always a fun time of year as we celebrate the successes of the past year and make plans for new and exciting challenges for the coming year. In the words of Dr. Seuss from "Oh, the Places You'll Go!":

*Congratulations!*

*Today is your day.*

*You're off to Great Places!*

*You're off and away!*

*You have brains in your head.*

*You have feet in your shoes.*

*You can steer yourself*

*Any direction you choose.*

The Regional Management Team is also off to a great start. Here is a summary of our recent meeting, June 6-7, 2014:

- Celebrated the successful 2014 Regional Competition with attendance at an all-time high (930 out of a total of 1100 members) and three choruses scoring over 600 points.

- Developed a long-range strategic plan.
- Chose a new logo for North by Northwest Region #13.
- Approved a proposed regional Operating Reserve and Investment Policy.
- Reviewed and approved Guidelines and Procedures for Region #13 Regional Management Team members.
- Approved plans to locate YWIH leaders from 5 different areas of our region.
- Reviewed the exciting plans for SET 2014 with "The Buzz," August 21-23 in Yakima. Make sure you put this at the top of your list of "Places to Go" this summer. Visit [sairegion13.org](http://sairegion13.org) for more information.
- Previewed the new regional website soon to be launched.
- Enthusiastically approved to continue the Side-by-Side Director/Judges breakfast at competition.
- Welcomed news about a new prospective chorus that is growing in Yakima.

*Submitted by Sally Wallace*

### Young Women in Harmony (YWIH)—Local Support With A New Twist

We know that outreach to support young women singers is most effective at the local level. So we are taking our efforts right down to the grass roots.

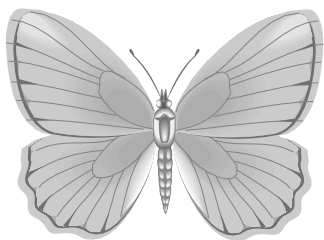
Region 13 has five primary geographic zones:

Alaska—Oregon/Southern Washington—Idaho/Eastern Washington—Montana—Western Washington

By having a YWIH specialist in each zone, we will improve our chances of linking programs, supporting outreach efforts, and helping chapters develop activities for the young women in their area. **We are seeking five volunteers to accept the YWIH specialist positions** (one specialist per geographic zone). These volunteers will work with our Region's YWIH Coordinator, Chera Boom, to support the wonderful youth programs already underway in each of these zones and to help chapters develop their own strategies for supporting young women singers. It is easy—just send Chera an email at [cherasingz@gmail.com](mailto:cherasingz@gmail.com) indicating your interest. This is a wonderful opportunity to put your passion for singing and encouraging young singers together. Don't wait. Get hold of Chera today!

*Submitted by Debra Aungst*





## RMT Marketing Stuff

### Free Money!

Yes, you read that right! This year Region 13 is continuing its mission of helping choruses achieve their marketing goals—whether it's for show promotion, membership drives, or other events—by offering each chorus \$100 per fiscal year. To receive your check, please email [Jo Sahlin](mailto:Jo.Sahlin@sairegion13.org) with some information about what this money will be used toward!

### If You Like Us, “Like” Us!

Besides regional email communication, Facebook is often the most immediate way we have to spread news and information to members. Plus, we strive to promote other resources about music education and the wonderful world of barbershop! If you have Facebook, please [click here](#) to see our page. See you there!

### Rah-Rah in Baltimore!

Will you be at International competition this year in Baltimore? Come join us on Tuesday, November 4 at 3:30 pm in the Pride of Portland rehearsal room (exact location TBA). We want to send our fabulous competitors onto the stage in style, so bring your Region 13 spirit and maybe a pom-pom or two!

### Region 13 Billboard Ads

Are you interested in creating a slide or two to be displayed in Baltimore? We can order slides as a region and keep costs lower! The price will be \$99 per slide. Please indicate your interest, including the number of slides you intend to

submit, and email [Jo Sahlin](mailto:Jo.Sahlin@sairegion13.org) by July 16. To ensure we receive the early discounted rates, please mail payment to Finance Coordinator Danie Stiles no later than July 23 at the address below:  
PO Box 505  
Woodinville, WA 98072  
Slides must be sent to [Jo Sahlin](mailto:Jo.Sahlin@sairegion13.org) by August 25.

### The Marketing Team Isn't a Team without You!

Where do you feel most at home—networking, meeting people, and actively collaborating to publicize events? Or maybe donning your creative hat to design promotional materials, write press releases, and brainstorm innovative ways to reach out to an audience? Great! We have several regional events coming up, including SET, Boost the Bank (September 14), and our Regional Rah-Rah in Baltimore, and your help is wanted for all of these things and more. If you'd like to branch out and take part in the behind-the-scenes action, this is a great way to get involved. For instance, are you an expert at making flashy PowerPoint slides, like the ones we'll use for billboard ads in Baltimore? Do you live in the Seattle area and have connections to local publications that would love to help us spread the word about what will be a fantastic quartet show at Boost the Bank? Or would you like to lend a hand in some other way? Let me know! I'll be waiting for your email [marketing@sairegion13.org](mailto:marketing@sairegion13.org) / [josahlin@gmail.com](mailto:josahlin@gmail.com)

*Submitted by Jo Sahlin*

## DIRECTOR WANTED

The Olympia Chorus seeks a dynamic, energetic leader! We're a smart, creative chorus of about 40 women, always looking to grow. Are you interested, or do you know someone who might be? All application materials are available on our [website](#). Application deadline is August 1, 2014.



## And The Winner Is...

The regional 50/40/10 raffle held at competition is a new “standard” for Region 13, and here’s how it works:

Members are encouraged to purchase raffle tickets for a chance to win 50% of the cash from the total sales. The region gets 40% and the remaining 10% goes to a chorus. The drawing is held at 10 pm on Saturday evening. Two tickets are drawn, the first receiving the 50% and the second garnering the right to name the chorus that will receive the 10%.

Here’s the story of one raffle ticket purchaser: Heather Tillman was at competition to cheer on her daughter, Rachel, who was singing with Pride of Portland chorus, and to help keep an eye on her grandson, Cadence. Then suddenly Rachel ended up in the emergency room, facing a stay in the hospital. Heather was back and forth between the hospital and trying to keep Cadence entertained at competition. When the raffle ticket sellers were promoting the sales, Cadence begged his

grandmother for permission to buy some. She relented when she learned she didn’t need to be present to win and gave him \$3 for 3 tickets. But she never gave the tickets another thought as she worried for her daughter’s health and all of the additional expenses being incurred.

At Saturday evening’s drawings, fortune saw to it that Heather was the winner of the 50% cash! The \$492.50 certainly helped this family with some of those extra expenses! Of course, Heather wasn’t present, but she was overjoyed to learn the news the next day by telephone.

The winner of the 10% drawing was not present either, but her friend was there to claim the \$98.50 for her chorus. And the region was happy to receive \$394 towards competition expenses.

And now you know the rest of the story.....

*Submitted by Judy Beckman, Assistant CRC, 2014*

## A Special Invitation

You are invited to join the amazing and talented women of the North by Northwest Region 13 Management Team (RMT).

We are:

- shapers of our future
- sparks of energy behind the regional events you love
- voices of encouragement and support for our choruses
- teachers and mentors for our members
- watchful eyes over our financial resources
- sources of ideas, strategies, communications, and of course BIG FUN!

If you’d like to give back to people you love and sing with, help spread the word about the joy and benefits of singing a cappella, or have a say in how your region works, JOIN THE REGIONAL MANAGEMENT TEAM.

Consider applying for one of the following positions available on the 2015-2017 RMT:

- Finance Coordinator—Marketing Coordinator
- Directors Coordinator—Events Coordinator

Curious, but not sure about jumping in? Apply for our newest position: Associate RMT Member. This is a one-year opportunity to learn about the workings of the organization and be mentored by one or two of our experienced RMT members.

- [Click here](#) for a job description
- Application form is available [here](#)

Don’t miss out! It’s a valuable experience and looks great on your resume, too! Deadline for applications is September 20th, 2014.

The women of the RMT look forward to working with you!

*Submitted by Pat Breen*

## New Master Director

Congratulations to Nikki Blackmer, director of a *cappella Joy Chorus*, who achieved the status of Master Director at competition in Spokane in April. Her joyful chorus thinks the world of her, coming up with adjectives like Fun! Dynamic! Irreverent! Talented! and Upbeat!

Nikki's musical training had all been in the classical field, as she graduated with a Master's Degree in Vocal Performance from the University of Washington. It wasn't until she came to Ajoy (as it is commonly called) intending to coach them until a permanent director could be found that she quickly learned how addictive barbershop music can be. She became the chorus's full time director in 2003 and took the chorus to competition in 2004 with just 23 people on stage.

Today Nikki is a full-time voice instructor and chorus coach, director of the adult choir at Lake Washington United Methodist Church, the lead in Frenzy Quartet (who placed in the top ten their last three times at International Competition), and a fast-rising talent in the North American Sweet Adeline community. She has sung with the Nashville Chorus and Lion's Gate Chorus in Vancouver, British Columbia.

A participant advances to Master Director status when he or she completes the Director Certification Program; serves as the chorus's director for at least one year; and directs that chorus to achieve a minimum of 600 points in regional competition.

We are proud to acknowledge Nikki's considerable accomplishment as she joins the ranks of other Master Directors in our North by Northwest Region 13.

*Submitted by Directors Coordinator Nancy Kurth and DCP Coordinator Judy Beckman*



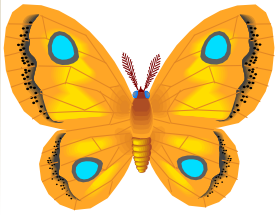
## Congratulations, Fairbanks Frontier!

The Fairbanks Frontier Chorus has a reputation in our region for their entertaining performances on the Regional Competition stage. This year was no exception. In fact, they are the FIRST winners of the new internationally recognized Audience Choice Award Winners in Region 13. For them, "winning the audience" is the most rewarding part of this hobby. Performing parodies and entertaining packages in their community brings these performers great joy. It's the audience reactions of laughter and applause that make all the hard work worthwhile. Naturally, then, taking these to the competition stage is perfect. The Open Division is made for a chorus like Fairbanks Frontier.

Director Patti Gallagher tells us she has a wonderful team of members who LOVE to put together these wacky and wonderful ideas. In fact, they are already dreaming about their next performance package. Patti has a great background in theater, performance, and barbershop so her leadership is perfect for a chorus whose most wonderful memories are those of the audience appreciation of their musical production. She shares that it's not just a costume or a joke or a parody that makes it entertaining, it's how you put it all together (with a beginning, a middle, and an ending) that makes a good package work. "Since winning this award, we are in a nice new place now." The door is open for them—they have a totally different attitude about competition now that the Open Division is an option. This award is very motivating for the chorus and they are determined, more than ever, to keep improving and sharing the things they love to do with all of us. Aren't we lucky!!

*Submitted by Nancy Kurth*





## Region 13 Chorus Chatter

### Alaska Sound Celebration Paints itself yellow, shows no fear in Spokane

The sounds of celebration could be heard throughout Spokane April 12 when Anchorage-based Alaska Sound Celebration Chorus captured its 4th Regional Championship. The victory seemed even sweeter this year, going up against more choruses in our exciting expanded region and having old and new competitors alike nipping at our Capezios.

After returning from our 14th-place finish in Honolulu last November, ASC hit the ground running once again to prepare for our 16-show Fur Rondy Melodrama – a community sell-out that nets the chorus enough cash to bring a variety of top SAI coaches to Anchorage throughout the year, as well as give members a break on contest costs. After Melodrama was over and the popcorn-covered floor had been cleared, the chorus kicked it into high gear to concentrate on regional contest with only a few weeks to spare.



“In its true champion fashion, ASC remained focused and determined as we prepared for Spokane and I couldn’t have been more proud of their performance,” ASC Master Director Peggy Benton said. “We’ll now do some local gigs for good causes, create next year’s Melodrama, and look toward burning up the stage in Vegas next year. We can’t wait!”

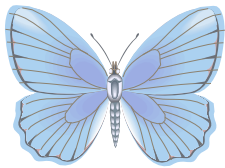
*Submitted by K.T. McKee*

### CAL CORNER

The following CAL members helped make our most recent contest fantastic by either performing, volunteering, or BOTH: *Amy Rose, Andrea Olsen, Andren Moyer, Anna Martin, Bianca Dixon, Carolyn Huber, Cris Conerty, Debbie Drake, Frances Davies, Grace Rawsthorne, Jill Landback, Karen Frerichs, Katy Hawley, Kay Scharr, Lora Ray, Melissa Pope, Rachel Pack, Sue Hahn, Sydney Thompson, and Tonya Garske*. We also congratulate former CAL members *Judy Cooper Maclaren, Linda Bergvinsson, Carol Harris, and Jamie Miller* for chartering our newest chorus, Sound Harmony! For a complete list of achievements and contributions of our tenacious and talented CAL members, please log in to the “Chapter-at-Large” landing page on the regional website.

CAL member Melanie Wroe, who was recently diagnosed with Stage IV non-small cell lung cancer (not the smoking kind), is keeping us posted on her health status and progress on the Facebook Site titled “[Melanie’s Circle](#)”, which now has almost 1400 members!

Finally, one of our CAL members was honored for 50 years of continuous membership at regional contest this year. Liz Reynolds joined Sweet Adelines May 5, 1964, and became a member of the Lilac City Chorus in Spokane, WA. She first tried out for Tenor, then gave Baritone a try, later Lead, and finally, found her permanent home in the Bass section! She later sang barbershop harmony in choruses in San Diego and Las Vegas, but eventually returned home to Spokane, where she helped charter the Spokane Falls Chorus. This chorus eventually became “Spirit of Spokane” and one of the most thrilling experiences of her life was when Mike Elliott led the new chorus to their first Region 13 Championship in 1998—the first of 5 consecutive 1<sup>st</sup> place awards. But Liz wasn’t  
*(continued page 10)*



## Chorus Chatter Continues...

*(continued  
from page 9)*

done yet... she helped charter RiversEdge Chorus in Spokane, from which she retired after 50 consecutive years of active membership in the organization. Now she sings



with a small group once a week comprised of 10 basses and 2 harmony parts—hence the name, “Basses Loaded.” Which reminds us of Liz’s undaunted sense of humor and positive outlook on life! Liz has sung in countless quartets and double quartets, written more scripts than she can remember, and has even toured England and Ireland with Zoe Thompson’s 110 Spirit 2000 Chorus. Many memories have been made and Liz states, “It’s been a rich, full life and I wouldn’t change any part of it!” Oh, and P.S. from Liz: “I LOVE YOU ALL!”

*Submitted by Cris Conerty*

### **Coeur d’Alene Chorus**

Region 13 members who attended contest this year may already be aware that the Coeur d’Alene Chorus won the

2014 Starburst Award for greatest percentage increase in membership. The other half of the story is that we also won this award in **2013**—our percentage increase in 2013 was 22%, and in 2014 was a whopping 31%!!

The biggest share of credit goes to our tireless Membership chair, Randee Johnson. She has been so faithful keeping contact with guests and prospective members, and is always patient and kind when providing information or answering questions. We were all so very thrilled and proud of receiving this honor for the second year in a row, and are determined to continue our efforts to include more women in the joys of barbershop—watch out for us in 2015: we are going for the THREE-PEAT!!



After the glow of contest had worn off, we concentrated our efforts preparing for our next major singout. We were invited to be the entertainment at the closing banquet of Idaho State PEO (Philanthropic Education Organization) convention, held May 17 at the Coeur d’Alene Casino in Worley. Our nine newest members had concentrated mainly on contest songs,

but diligently focused on learning eight repertoire songs for this performance. Thanks to their hard work, all passed their check-off recordings, and we had 25 singers on the risers to ring the chords for approximately 350 very appreciative PEO members and guests. We received many compliments on both our beautiful sound and our red sequined outfits. Events like this keep us active in our community, build good will, and strengthen our performing skills (and what fun!).

*Submitted by Lori Gessner*

### **Grand Olympics Chorus**

Grand Olympics Chorus welcomes summer with preparations for our annual show to be held at Sequim High School, September 20, 2014. Our “life on the farm” theme will be portrayed with country songs in barbershop harmony, some written and arranged by our director, Mike Menefee. The chorus is having a contest among members to name the show. Featured guests will include the North by Northwest Region 13 2014 silver medalist quartet Aspire!, as well as the men’s quartet No Batteries Required and the Olympic Peninsula Men’s Chorus. Stay tuned for more information, which will soon be on the Region 13 calendar!

*Submitted by Priscilla Patterson*



## More Chorus Chatter ...

### Jet Cities Chorus

Jet Cities Chorus is back in the groove after this year's exciting competition in Spokane! We'd like to congratulate all of the competitors and especially this year's winners, Pepper Quartet and Alaska Sound Celebration Chorus! We're especially proud of our competing quartets: Four Get Me Nots (3<sup>rd</sup> place), Kalliope (4<sup>th</sup> place), Peppermint Twist (5<sup>th</sup> Place), and that doggone Mischief!

We've been busy with performances at the Blue Poppy Festival at

Weyerhaeuser's Rhododendron Garden on May 17, the Federal Way Women's Club luncheon on May 21, and as special guests at the Todd Beamer High School choir concert on May 29. We have upcoming performances at Emerald Downs on June 29, the opening reception for the Association for Rural and Small Libraries conference on Sept 3 in Tacoma, and at the State Fair in Puyallup on September 6.

Our rehearsals have been exciting and we're learning new music in anticipation of a coaching session  
(continued page 12)

## Looking For a Liaison to the Young Singers Foundation

The Young Singers Foundation (YSF) was created by Sweet Adelines International in 1992. Early on, the Foundation's Management Committee determined the purpose was to enrich the lives of young people through educational programs in vocal music by giving scholarships and grants to school-based music programs, and funding to after-school and community vocal music activities for young people.

Region 13 is fortunate to have three individuals who support the efforts of this international organization:

Shelly Pardis, YSF Chair. Shelly is also the co-director of Helena Xpress Singers and is a member of Region 13's Education Team.

Nancy Kurth, YSF Liaison Coordinator. Nancy is also the director of Cascade Harmony Chorus and is Region 13's Directors Coordinator.

Sally Wallace, YSF Grant Review Committee. Sally is also the in-house coach for the Coeur d'Alene Chorus and Region 13's Team Coordinator.

Each Sweet Adelines International region selects a YSF Liaison to represent their own region. **Help wanted: a YSF Liaison to represent Region 13.** Please consider volunteering for this great assignment. Send an email to Debra Aungst, Education Coordinator, at [aungstd@gmail.com](mailto:aungstd@gmail.com) indicating your interest. This is a great opportunity to help our youth. The work is seasonal and is perfect for many people who want to help but are available for only a portion of the year. Please contact Debra today.

## REGIONAL EVENTS

### AUGUST

**August 21-23: Summer Enrichment Time** with the Buzz! in Yakima, WA

### SEPTEMBER

**September 14: Boost the Bank** support our region's Baltimore-bound quartets

**September 20: YAHOO! It's a Harmony Hoedown** presented by Grand Olympics Chorus

**September 20: Cascade Harmony Chorus Show** headliners include Blink! and Out! quartets

### OCTOBER

**October 11: Operation Smile Benefit** presented by Seattle Shores Chorus, proceeds donated to Operation Smile

**October 11: Sing and Celebrate** Helena Xpress Singers present their 40th anniversary show

**October 18: Pride of Portland Chorus Baltimore Send-Off Show** featuring the newest Queens of Harmony, LoveNotes

[Click here to see more upcoming regional events!](#)



## Additional Chorus Chatter

*(continued from page 11)*  
with Cindy

Hanson this fall.

And finally, welcome to new member Karen Floyd, and congratulations to Kelly Hobson on her engagement and upcoming summer wedding!



You may have seen us working at the Scone Wagon at the Meeker Days celebration in Puyallup June 20-22. See you all soon at SET in Yakima!

*Submitted by Rhonda Gould*

### Olympia Chorus

The Olympia Chorus Presents: "TUNESTONE: Showdown at the O.K. Chorale"

Mark your calendars for October 11, 2014 at 2:00 pm for a wild west-themed show sure to set your spurs a-janglin'! This is a one-show-only matinée performance that you will NOT want to miss! This barbershop hoedown, with headliners The Barn Owls, will take place at the Kenneth J. Minnaert Center for the Arts at South Puget Sound

Community College in Olympia, WA. For ticket information please contact [Denise Steigers](#).

Immediately following the performance, we hope Region 13 will join us in saying a fond farewell to our director, Dottee Rambo, at an afterglow in Olympia.

*Submitted by Jo Sahlin*

### Pacific Sound Chorus

just keeps GROWING...in Membership, in Experience, and in Friendships!

PSC's complimentary vocal education classes produced excellent results during our One Voice, One Message: Global Expansion program, bringing in eight new members so far this year! Four of these singers are new to SAI, and more are on track to audition soon!

We are pleased with the outcome and have learned much during this process. Combining education with recruitment is crucial. "Invite them and they will come. Educate them and they will stay." Having fun singing and making new friends is icing on the cake.



As Region 13's 2013 champs, PSC is busy preparing for November's International Competition in Baltimore. We say THANK YOU to our wonderful coaches—Joan Boutilier, Betty Clipman, Lori Lyford, Sandy Marron, Diane Porsch, Judy Pozgay-Rimple, and Melanie Wroe.

We are also extremely fortunate to have in-house coaches/judges who share their vast knowledge and experience—Beth Smith (Sound), Joan Levitin (Expression), and our Master Director Susan Kegley (Music) who challenge us to improve (we are champions, after all), while having fun! We are striving to "Be-More in Baltimore!" See you there. P.S. We LOVE you!

*Submitted by Carol Drew*

### Pride of Portland Chorus

Summer is here and that means sunshine, coaching sessions, and show packages. With Baltimore on our minds, Pride of Portland is enjoying a boom in new members as guests and Sweet Adelines from area choruses hop on board the joy ride that is International Competition. Members from as far away as Rolling Hills Chorus have joined the ranks. We couldn't be more delighted to welcome them.

*(continued page 13)*





## Further Chorus Chat ...

*(continued  
from page 12)*

Coaching is the weight that tips the scales and we have several fabulous coaches on tap: Sharon Babb (July 8-9), Sandy Marron (August 15-16) are confirmed, and we're in negotiations with Erin Howden for sometime in September. Our coaching sessions are open to all Sweet Adelines members. Drop one of our Membership Coordinators, [Cheryl Gertz](#) or [Donna Stewart](#), a line if you're coming. We love to perform for an audience!

Speaking of performing, our show team has kicked things into high gear with the theme of our annual show. Pride will be "Steppin' Out" this October 18 with none other than the 2014 International Champion Quartet, LoveNotes, and 2014 Region 13 Champion Quartet, Pepper. Pride will host two shows: a matinee and an evening show. Look for details on our show [website](#).



*Submitted by Jo Brehm*

### Seattle Shores

Seattle Shores had a great time at contest, and we were very happy to have three new members performing with us.

It was the first time on contest stage for Liz Rosenthal, Carrie Howard, and Christine Allen, and it was an experience they will never forget. They participated in everything contest had to offer and were very impressed and happy to be a part of it. Seattle Shores went for evaluation only so we're now working on improving our skills in the months ahead.

In early May Seattle Shores celebrated its 61<sup>st</sup> birthday with cake and punch during a chorus rehearsal. We were honored to have our charter member, Opal Hicks, in attendance and have her reminisce about the fun times she had 61 years ago plus all of her traveling made possible by this organization. We're looking forward to many more years spreading Seattle Shores' harmony throughout the area by performing at retirement communities where we bring smiles to many faces, and participating in other activities to spread the joy of music.

*Submitted by Donna Heivilin*

### Sound Harmony Chorus

Members of Sound Harmony Chorus would like to extend a big thank you to North by Northwest Region 13 for the baby shower that was held in our honor during competition weekend. We are so grateful

for the cash gifts from 5 wonderful choruses along with confetti, a scrapbook (which will be on display at SET), and good wishes from many more. Our pitch pipe blower loves the new electronic pitch pipe, as the old chromatic one had seen better days.



Finally, we have already put the gently-used red costumes given to us to good use. We wore them during a Vaudeville-Style Variety Show at the Historic Everett Theatre in May. Our first-time competitors in this region shared these comments about competition weekend. "Our friendly and helpful guides, the actual walk-through of the stage area prior to competition, and the opportunities to practice really gave us some great tools to help us deliver our first performance with confidence." "I appreciated how well-organized the competition seemed to be. Considering how many quartets and choruses competed, the program seemed to move rather quickly and smoothly without too much unnecessary down time." "I loved the way certain  
*(continued page 14)*



## REGIONAL MANAGEMENT TEAM



**Team Coordinator**  
Sally Wallace  
208-772-3379  
[team@sairegion13.org](mailto:team@sairegion13.org)



**Communications Coord.**  
Pat Breen  
206-349-7128  
[communications@sairegion13.org](mailto:communications@sairegion13.org)



**Directors Coordinator**  
Nancy Kurth  
503-524-0522  
[directors@sairegion13.org](mailto:directors@sairegion13.org)



**Education Coordinator**  
Debra Aungst  
253-905-6265  
[education@sairegion13.org](mailto:education@sairegion13.org)



**Events Coordinator**  
Judy Galloway  
541-490-2481  
[events@sairegion13.org](mailto:events@sairegion13.org)



**Finance Coordinator**  
Danie Stiles  
425-488-8211  
[finance@sairegion13.org](mailto:finance@sairegion13.org)



**Marketing Coordinator**  
Jo Sahlin  
208-964-1855  
[marketing@sairegion13.org](mailto:marketing@sairegion13.org)



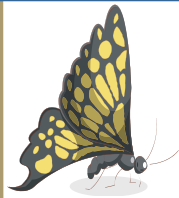
**Membership Coordinator**  
Sharon Stocks  
406-431-5039  
[membership@sairegion13.org](mailto:membership@sairegion13.org)



InTune is published three times a year for members of North by Northwest Region 13, Sweet Adelines International. For questions or comments, please contact Kelly Hobson  
[kelly.s.hobson@gmail.com](mailto:kelly.s.hobson@gmail.com)

The next issue will be distributed in October; **deadline is October 12, 2014.** Send articles to Grace Rawsthorne  
[g\\_rawsthorne@hotmail.com](mailto:g_rawsthorne@hotmail.com).

Copyright 2014; all rights reserved. Check us out on the web: [sairegion13.org](http://sairegion13.org)



## Last Chorus Chat!

*(continued from page 13)* watching so many excellent choruses would wear a performances really made me want accessory to show unity. We always to be good." Thank you, North by knew who was in those choruses, Northwest Region 13, for a where they belonged. They seemed wonderful weekend! so well put together!" "I loved seeing everyone's choreography. *Submitted by Linda Bergvinsson* I'm not much of a dancer, but

## It's in The Can Contest—SET 2014

### Young Singers Foundation Campaign

It's in the Can is a coin collection program, with proceeds donated to the Young Singers Foundation, the official charity of Sweet Adelines International. Information was shared at the Presidents Forum during competition weekend, and you've seen an article or two about this in prior InTune publications.

NOW, it's time for our first collection and contest.

The essence of the program is to encourage individuals and choruses to deposit small bills or spare change into a specially marked canister, can, or box. Periodically, the donations are deposited into the chapter's treasury, and a check for the total amount collected will be presented to the YSF Coordinator (who will send our donations to the Foundation) at the Friday evening session at SET, August 22, 2014.

Thursday evening and Friday during the day, there will be a display table for choruses to put their "Can" on display and all attendees may vote for the following categories:

- The biggest container
- The prettiest container
- The most unique collection process

Voting will end at the close of the Friday afternoon class sessions and winners will be announced at the beginning of the Friday evening class session. At this same time, a representative from each chorus will come to the mic to present their check (made payable to YSF) and announce the amount they have collected for the Foundation. A prize will also be awarded to the chorus with the largest amount donated.

*Submitted by Nancy Kurth*